

USE TILT KIT OPTION FOR INSTALLATIONS THAT REQUIRE MODULES TO BE TILTED ABOVE THE EXISTING ROOF SLOPE

LOW TILT SYSTEM SHOWN IS DESIGNED FOR TILT ANGLES FROM 0 TO 15 DEGREES ABOVE ROOF SURFACE

INSTALL ALL L-FEET IN ORIENTATION SHOWN

TORQUE $\frac{5}{16}$ " \varnothing HARDWARE TO THE FOLLOWING MINIMUM VALUES UNLESS OTHERWISE NOTED:
 - SILVER S.S. 16 FT-LBS
 - BLACK S.S. 9 FT-LBS

REFER TO ENGINEERING CHARTS FOR RAIL SPAN BASED ON MODULE TILT ANGLE, WIND SPEED, AND SNOW LOAD

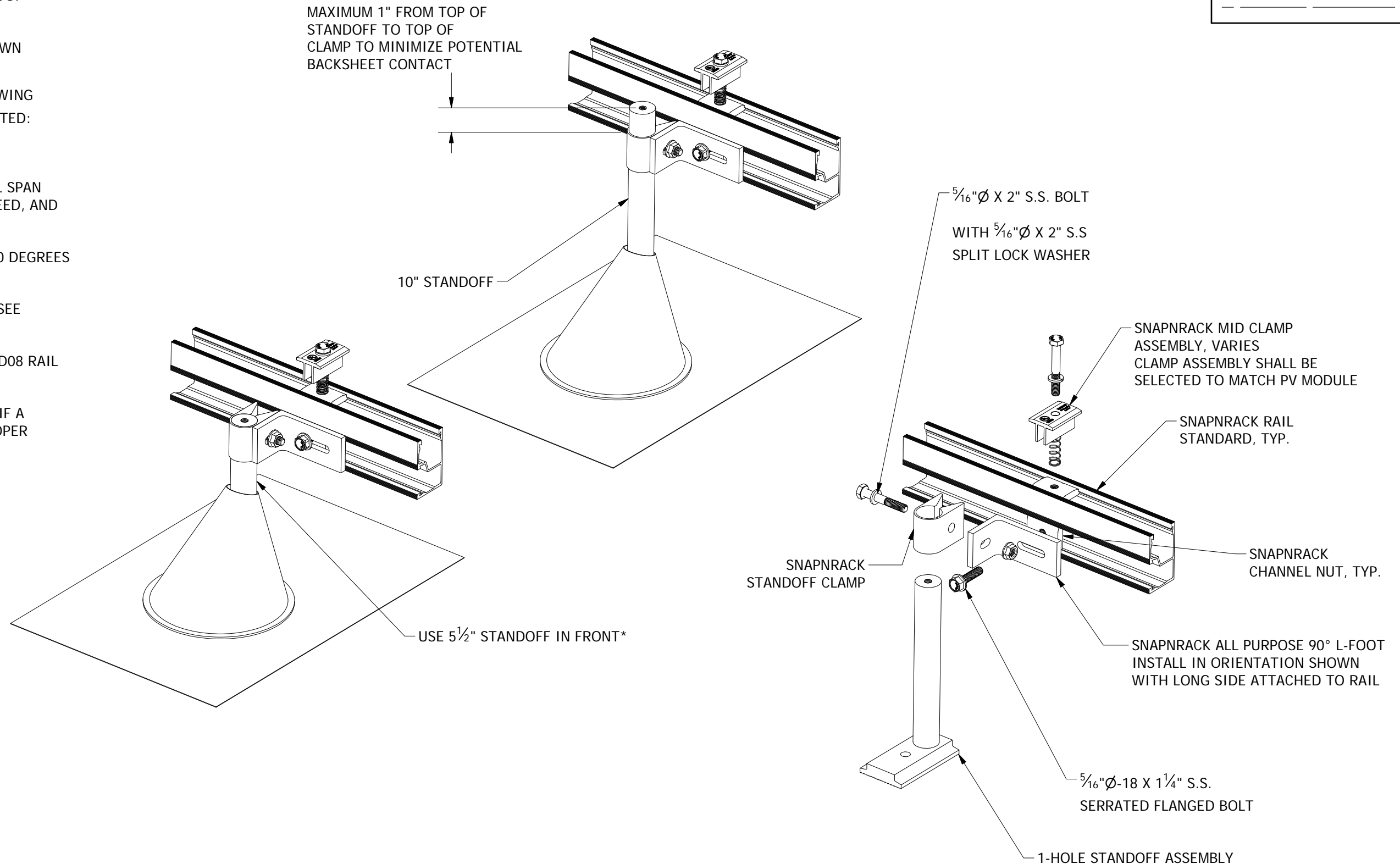
FOR MEDIUM TILT APPLICATIONS UP TO 20 DEGREES SEE "S100-D13 MEDIUM TILT KIT"

FOR MODULE OVERHANG REQUIREMENTS SEE "S100-D07 TYPICAL LAYOUT"

FOR LEVELING REQUIREMENTS SEE "S100-D08 RAIL LEVELING"

*A SITE-SPECIFIC ANALYSIS IS REQUIRED IF A TALLER STANDOFF IS NECESSARY FOR PROPER INSTALLATION

REVISION:		
G	11/28/2017	UPDATES



	Sunrun South LLC 595 MARKET STREET, 29TH FLOOR • SAN FRANCISCO, CA 94105 USA PHONE (415) 580-6900 • FAX (415) 580-6902	DESIGNER: <u>G.McPheeters</u> DRAFTER: <u>D.Ryan</u> APPROVED BY: <u>G.McPheeters</u>	SCALE: <u>DNS</u> DATE: <u>11/28/2017</u>	PART NUMBER: <u>S100-D12</u>	DESCRIPTION: LOW TILT KIT (15 DEG TILT KIT W_5-1-2IN AND 10IN STANDOFFS)	REV <u>G</u>
	<small>THE INFORMATION IN THIS DRAWING IS CONFIDENTIAL AND PROPRIETARY. ANY REPRODUCTION, DISCLOSURE, OR USE THEREOF IS PROHIBITED WITHOUT THE WRITTEN CONSENT OF SUNRUN SOUTH LLC.</small>					