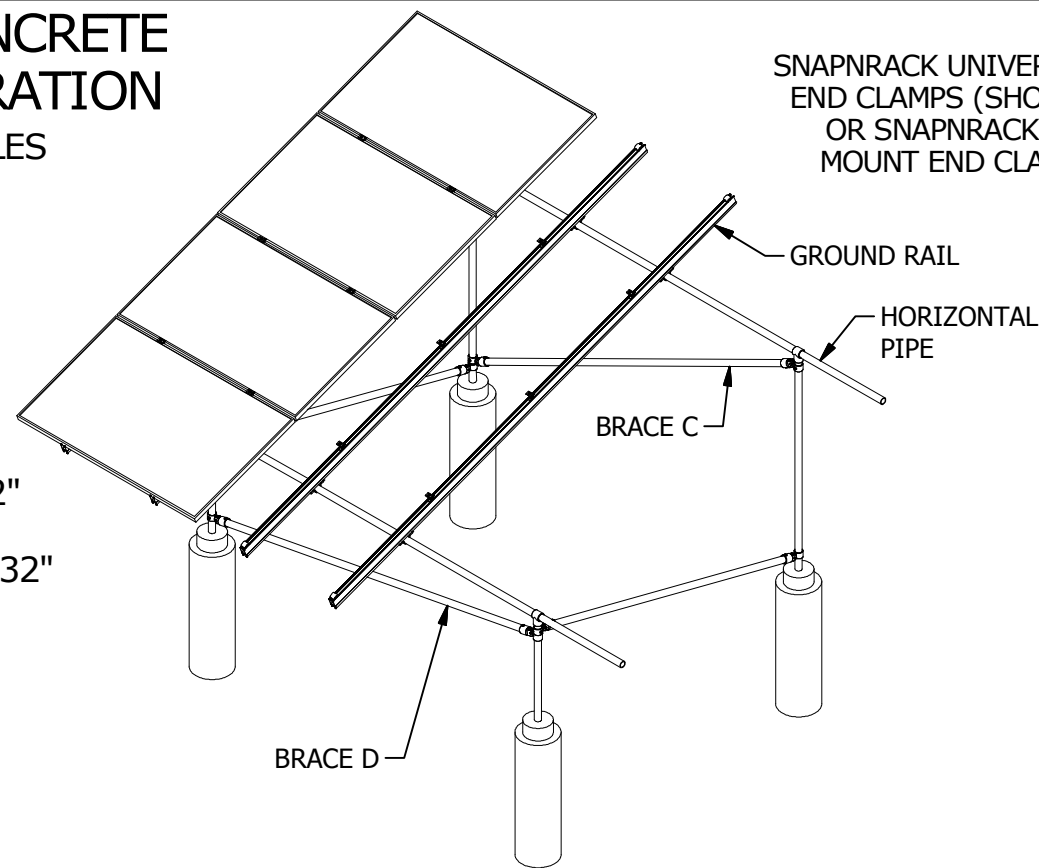


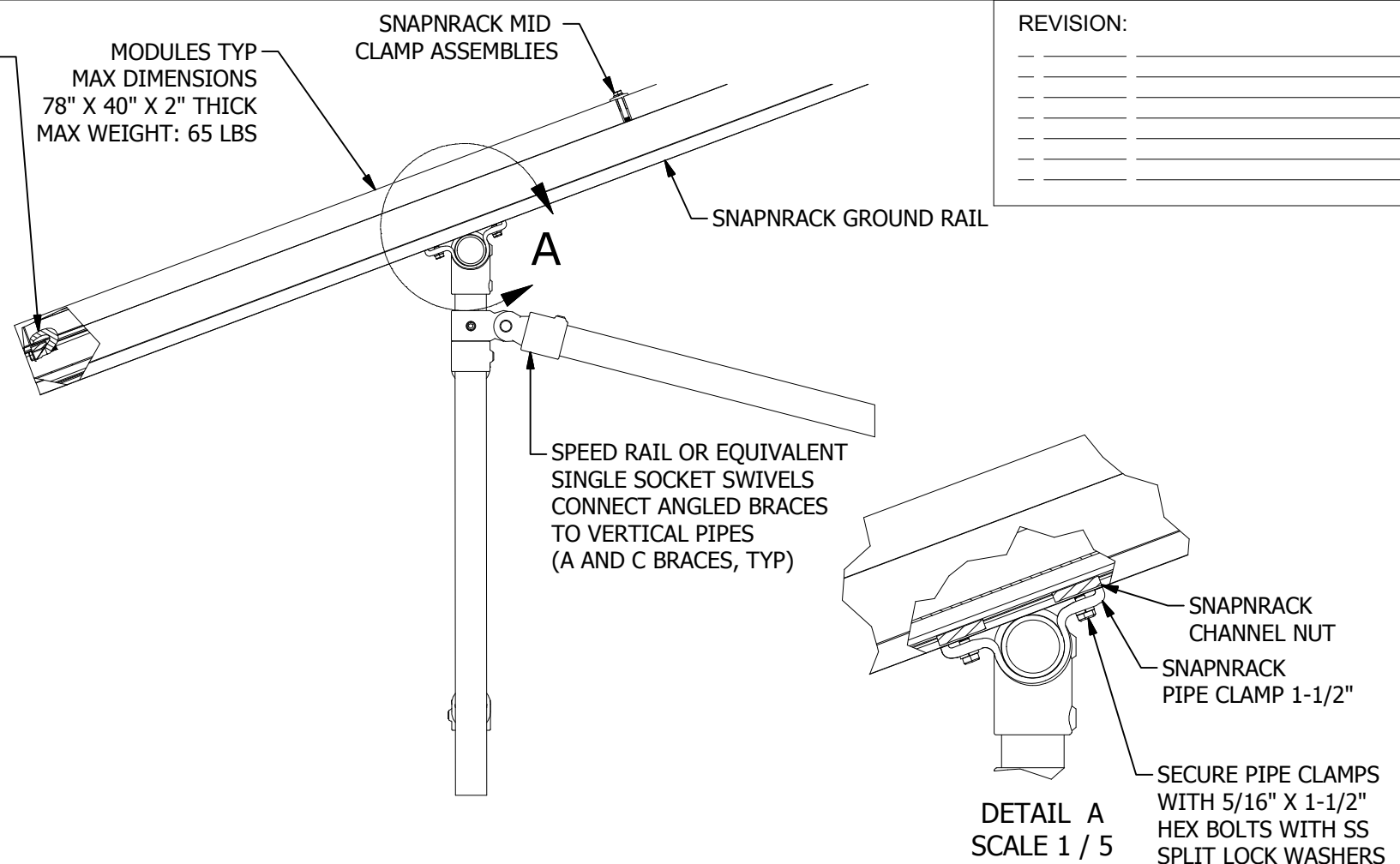
STANDARD CONCRETE PIER CONFIGURATION

SEE ENGINEERING TABLES FOR PIER DEPTHS AND SPAN LIMITATIONS.

UNLESS OTHERWISE SPECIFIED IN ENGINEERING DOCS, THE FOLLOWING VALUES APPLY:
 MAX RAIL LENGTH: 162"
 RAIL SPAN: 96"
 MAX RAIL OVERHANG: 32"

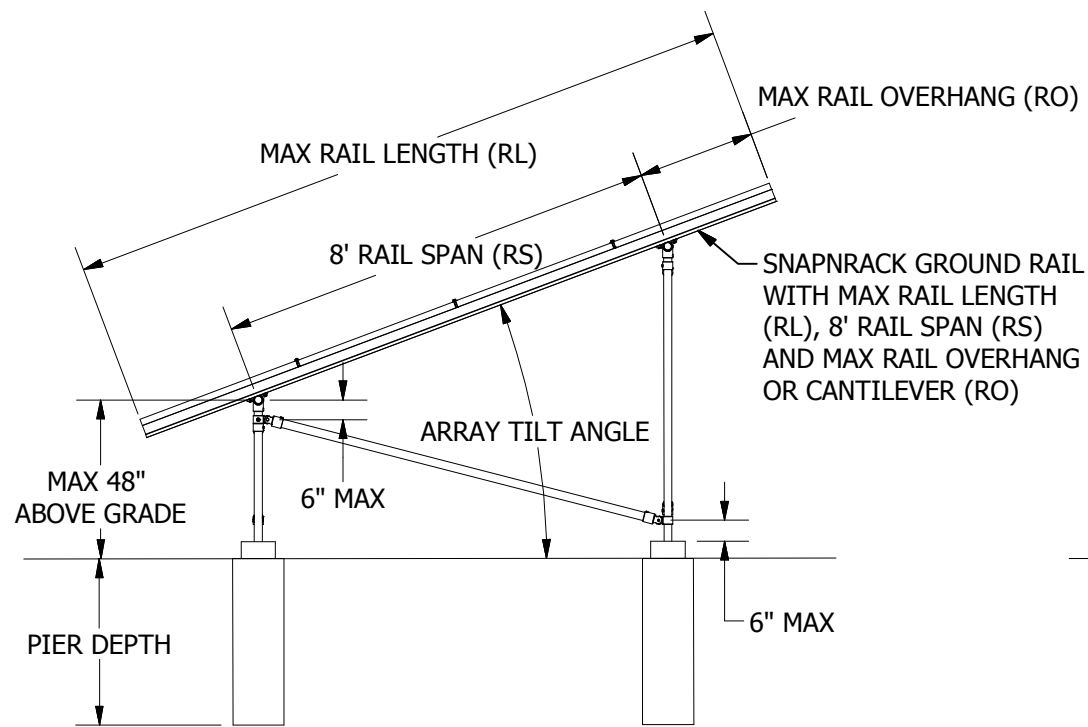


ISO VIEW OF RACKING ASSEMBLY

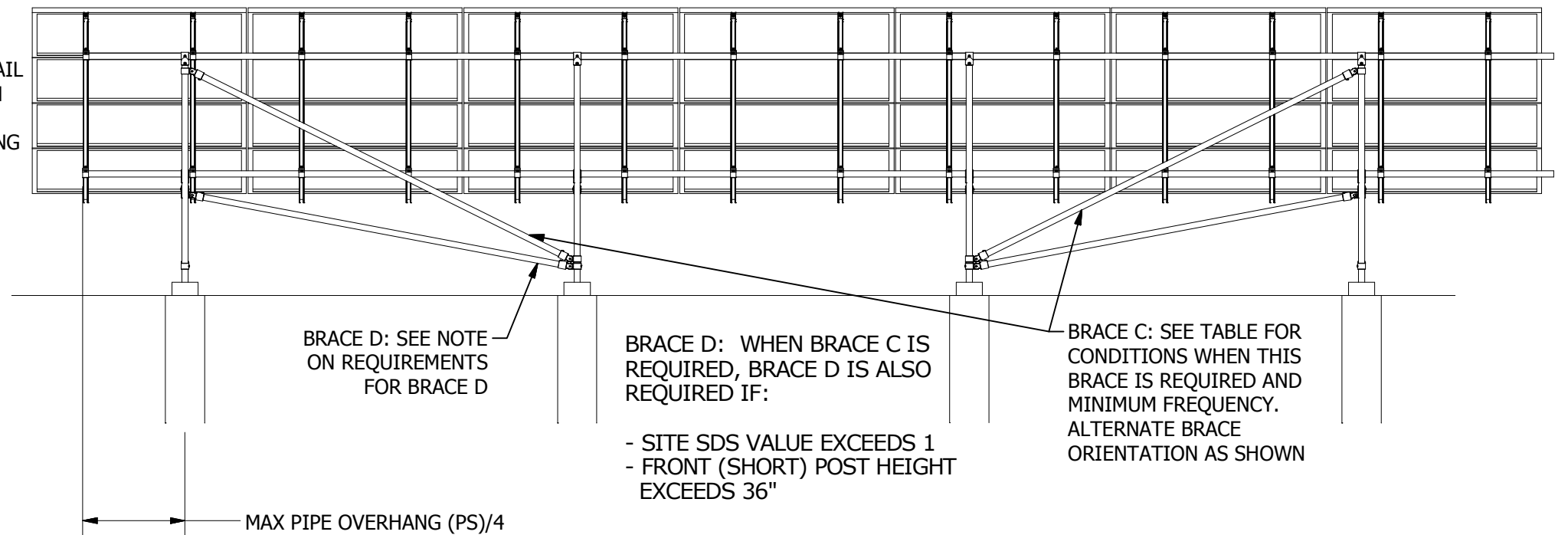


DETAILED VIEW OF PIPE TO RAIL AND BRACING INTERFACE

REVISION:



ARRAY SIDE VIEW



ARRAY BACK VIEW



MAINSTREAM ENERGY CORP.
 775 FIERO LANE, SUITE 200 • SAN LUIS OBISPO, CA 93401 USA
 PHONE (805) 528-9705 • FAX (805) 528-9701

THE INFORMATION IN THIS DRAWING IS CONFIDENTIAL AND PROPRIETARY. ANY REPRODUCTION, DISCLOSURE, OR USE THEREOF IS PROHIBITED WITHOUT THE WRITTEN CONSENT OF MAINSTREAM ENERGY CORPORATION.

DESIGNER: G McPheeters
 DRAFTER: D Ryan
 APPROVED BY: _____

SCALE: DNS
 DATE: 120113

PART NUMBER: S200 D01

DESCRIPTION: SERIES 200 OVERVIEW

REV G