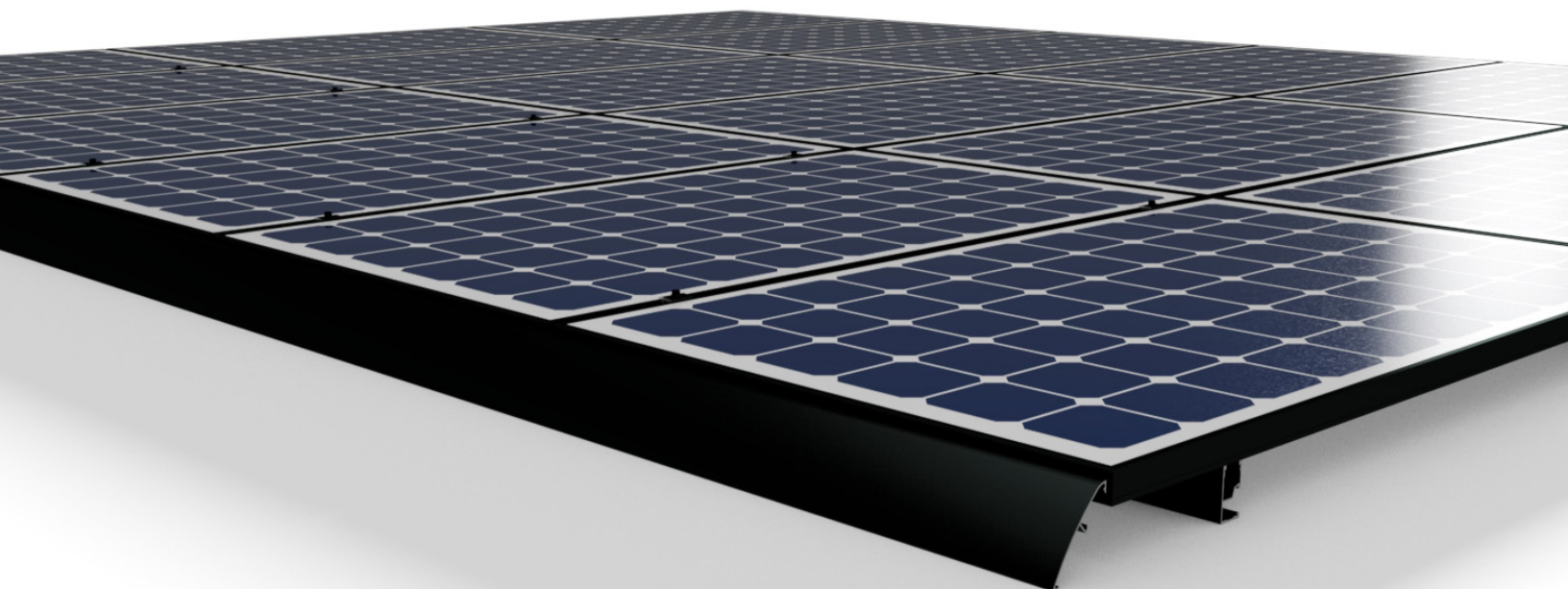


Array Skirt



Sleek Look. Attractive Design. Easily Mounted.



Skirt mounts attach to any standard module using a single bolt with a 1/2" socket



The skirt easily snaps onto the mount providing a clean finished look



Splice provides snap-in attachment of skirt sections together



Can be installed at any time allowing easy retrofit of existing systems

Start Installing Array Skirts Today!

Array Skirt

An enhanced aesthetic option with a sleek black finish provides flush clean line homeowners love. When installed, the Array Skirt offers a clean finish to the front of arrays covering any screws, bolts, wires, or mounting hardware. It mounts directly to standard module frames allowing it to attach to almost any array.

Skirt Mounts

- Hook onto the inside of the module frame
- Secured in place with ½” fastener from the front of module preventing any need for reaching under the array

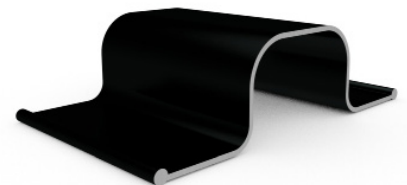


Skirt

- Snaps into place on the mount easily with no tools required
- A smooth curved profile provides an elegant finished look

Splice

- Attaching separate sections of the skirt is easy with the snap-in splice
- Provides a seamless transition between skirt sections



End Caps

- Cover end sections of the skirt so no cuts are visible
- Easily snap end caps onto the ends of any skirt section

Quality. Innovative. Superior.

SnapNrack Solar Mounting Solutions are engineered to optimize material use and labor resources and improve overall installation quality and safety.

877-732-2860

www.snapnrack.com

contact@snapnrack.com

© 2022 by SnapNrack Solar Mounting Solutions. All rights reserved