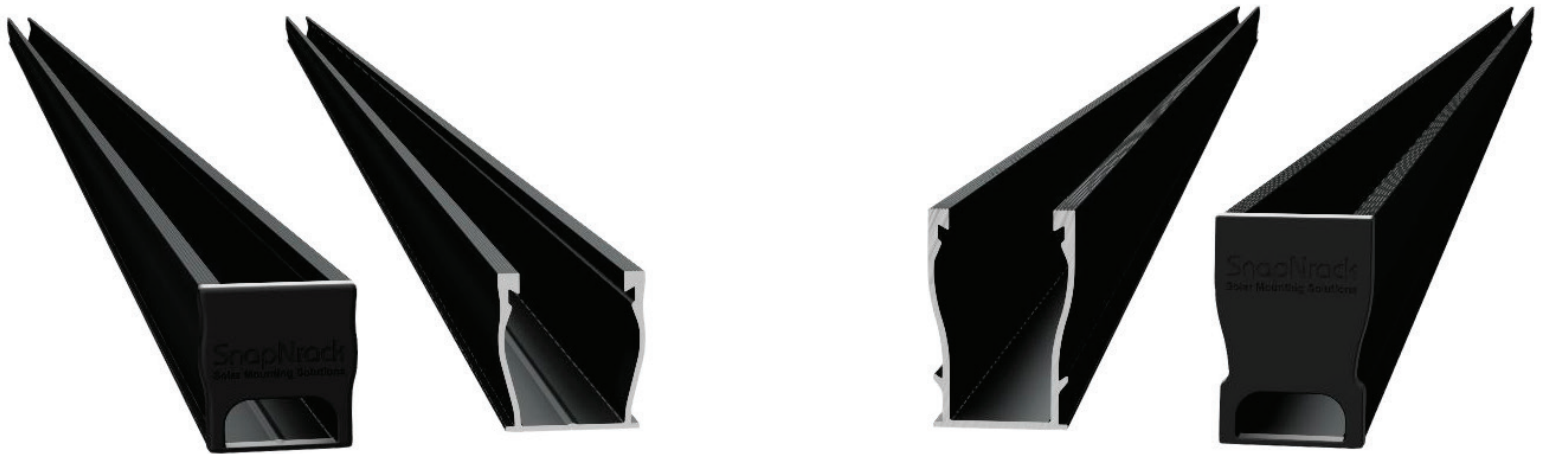


Ultra Rail



The Ultimate Value in Rooftop Solar



Industry leading Wire
Management Solutions



Mounts available for all
roof types



Single Tool Installation



All SnapNrack Module
Clamps & Accessories
are compatible with
both rail profiles

Start Installing Ultra Rail Today

RESOURCES
DESIGN
WHERE TO BUY

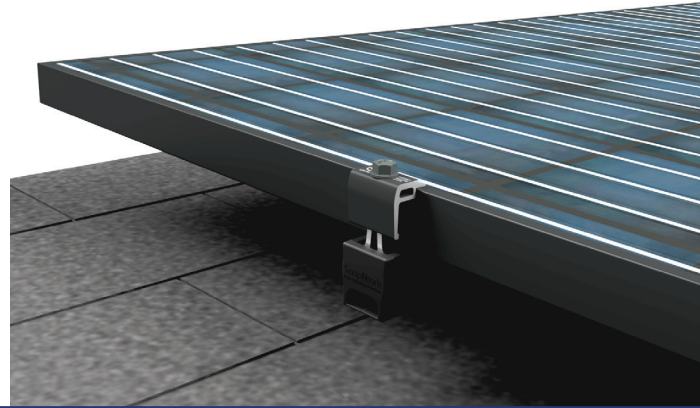
snapnrack.com/resources
snapnrack.com/configurator
snapnrack.com/where-to-buy

SnapNrack Ultra Rail System

A sleek, straightforward rail solution for mounting solar modules on all roof types. Ultra Rail features two rail profiles; UR-40 is a lightweight rail profile that is suitable for most geographic regions and maintains all the great features of SnapNrack rail, while UR-60 is a heavier duty rail profile that provides a larger rail channel and increased span capabilities. Both are compatible with all existing mounts, module clamps, and accessories for ease of install.

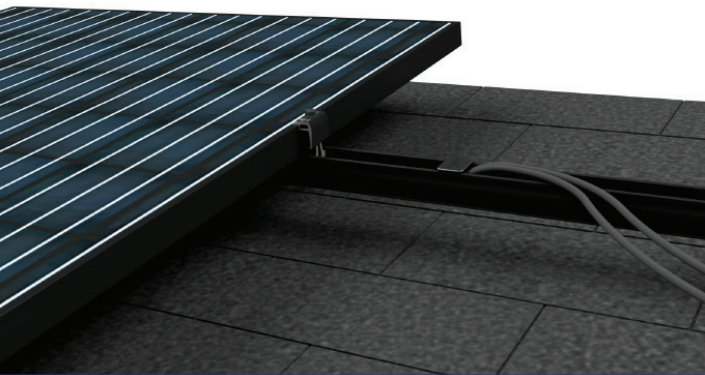
The Entire System is a Snap to Install

- New Ultra Rail Mounts include snap-in brackets for attaching rail
- Compatible with **new** Ultra Rail Mid Clamps & End Clamps that are one-size-fits-all universal clamping height
- Universal End Clamps & snap-in End Caps provide a clean look to the array edge



Unparalleled Wire Management

- Open rail channel provides room for running wires resulting in a long-lasting quality install
- **New** module clamps eliminate bolt interference in the rail channel creating more space for wire management
- Industry best wire management offering includes Junction Boxes, Universal Wire Clamps, MLPE Attachment Kits & Conduit Clamps
- System is fully bonded & listed to UL 2703 Standard



Heavy Duty UR-60 Rail

- UR-60 rail profile provides increased span capabilities for high wind speeds and snow loads
- Taller, stronger rail profile includes profile-specific rail splice and end cap
- All existing mounts, module clamps, and accessories are retained for the same great install experience



Quality. Innovative. Superior.

SnapNrack Solar Mounting Solutions are engineered to optimize material use and labor resources and improve overall installation quality and safety.

877-732-2860

www.snapnrack.com

contact@snapnrack.com

© 2021 by SnapNrack Solar Mounting Solutions. All rights reserved