

DESCRIPTION:
**SNAPRACK, ULTRA RAIL VARIABLE TILT
 HARDWARE KIT**

PART NUMBER(S):
242-92116

DRAWN BY:
 mwatkins

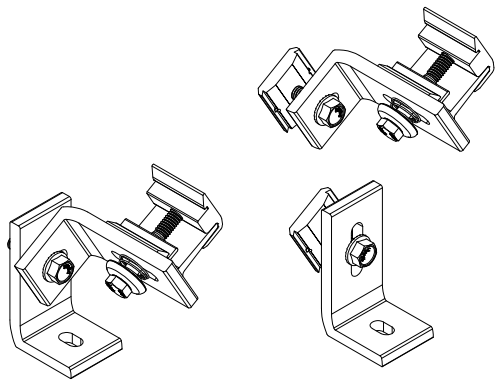
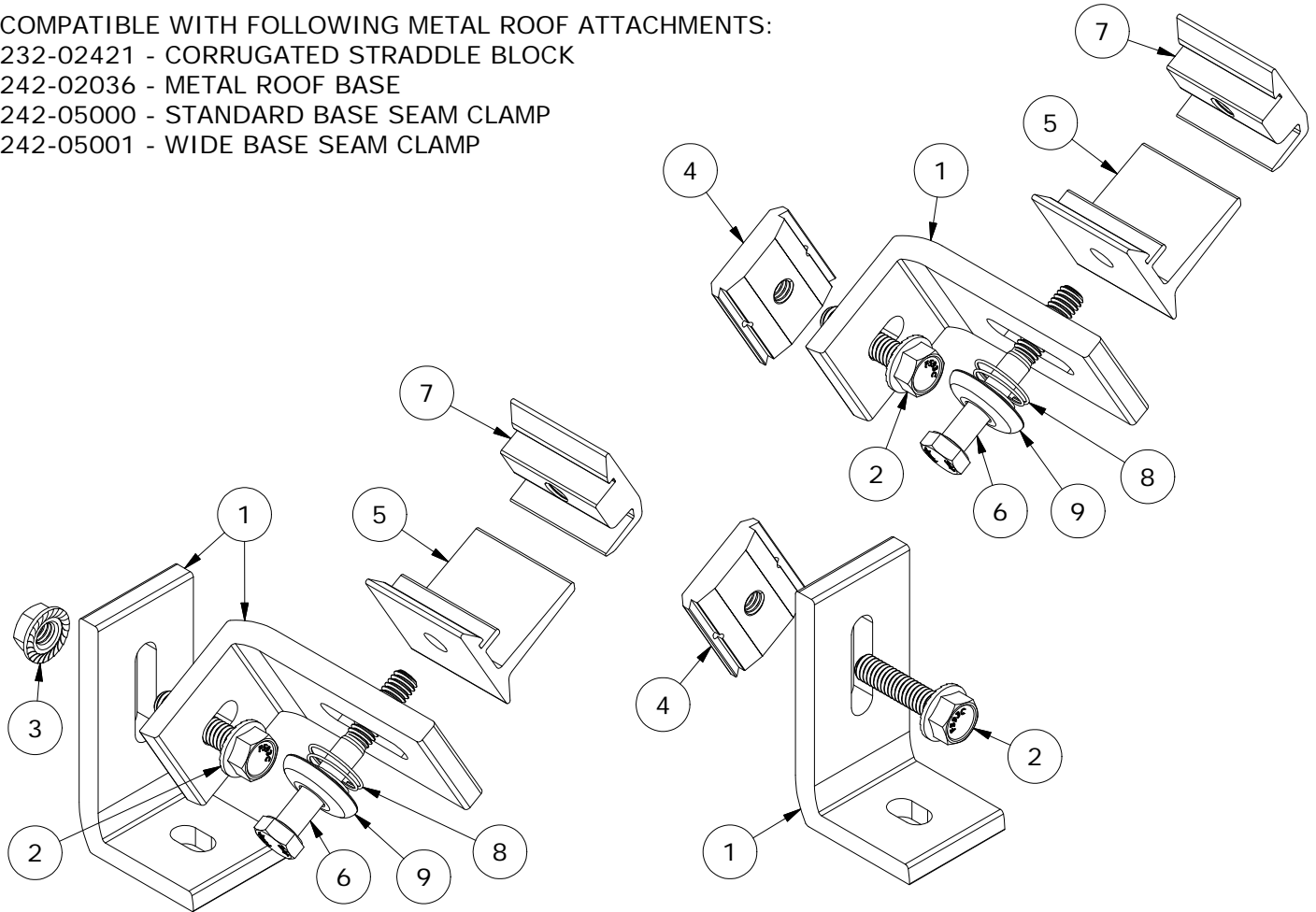
REVISION:
A

SnapNrack™
 Solar Mounting Solutions

595 MARKET STREET, 29TH FLOOR • SAN FRANCISCO, CA 94105 USA
 PHONE (415) 580-6900 • FAX (415) 580-6902

THE INFORMATION IN THIS DRAWING IS CONFIDENTIAL AND PROPRIETARY. ANY REPRODUCTION, DISCLOSURE, OR USE THEREOF IS PROHIBITED WITHOUT THE WRITTEN CONSENT OF SUNRUN SOUTH LLC.

COMPATIBLE WITH FOLLOWING METAL ROOF ATTACHMENTS:
 232-02421 - CORRUGATED STRADDLE BLOCK
 242-02036 - METAL ROOF BASE
 242-05000 - STANDARD BASE SEAM CLAMP
 242-05001 - WIDE BASE SEAM CLAMP



PARTS LIST		
ITEM	QTY	DESCRIPTION
1	4	SNAPRACK, AP90 L FOOT PRC, CLEAR
2	3	BOLT, FLANGED HEX, 5/16IN-18 X 1-1/4IN, SS
3	1	NUT, FLANGE, SERRATED, 5/16IN-18, SS
4	2	SNAPRACK, BONDING CHANNEL NUT
5	2	SNAPRACK, ULTRA RAIL MOUNT THRU PRC, CLEAR
6	2	5/16IN-18 X 2-1/4IN SS HCS BOLT
7	2	SNAPRACK, ULTRA RAIL MOUNT TAPPED PRC, CLEAR
8	2	SNAPRACK, ULTRA RAIL MOUNT SPRING
9	2	SNAPRACK, ULTRA RAIL MOUNT SPRING CAGE

MATERIALS:	6000 SERIES ALUMINUM, STAINLESS STEEL	OPTIONS:
DESIGN LOAD (LBS):	SEE ENGINEERING REPORT	
ULTIMATE LOAD (LBS):	SEE ENGINEERING REPORT	
TORQUE SPECIFICATION:	12 LB-FT	
CERTIFICATION:	UL 2703, FILE E359313	
WEIGHT (LBS):	1.31	