

ADDITIONAL LEVELING ON SNAPNRACK  
ULTRA RAIL STANDARD AND HD STANDOFFS  
WITH LEVELING SPACERS

MODULE HEIGHT OFF ROOF SHOWN WITH  
UR-40 RAIL. FOR UR-60 RAIL, ADD  $\frac{5}{8}$ "

ULTRA RAIL STANDOFF ATTACHMENTS  
FEATURE  $\frac{3}{8}$ " OF VERTICAL ADJUSTABILITY  
WITH THE USE OF 1" LEVELING SPACERS.

THE FIRST  $\frac{1}{8}$ " OF ADJUSTABILITY IS  
ACCOMPLISHED WITH SLIDING FEATURES  
BUILT INTO STANDOFF CLAMP COMPONENTS

FOR 1" OF ADDITIONAL HEIGHT  
ADJUSTMENT, ADD ONE LEVELING SPACER  
ON TOP OF THE STANDOFF. USE OF ONE  
LEVELING SPACER NOT TO EXCEED 30% OF  
ATTACHMENT POINTS ON 10" STANDOFFS.

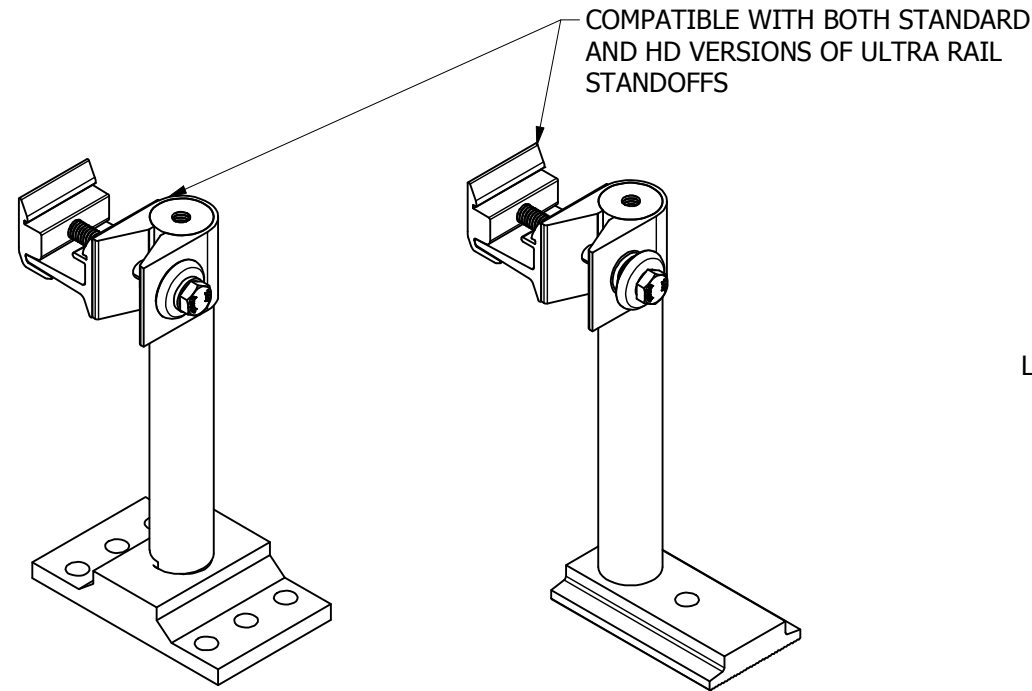
FOR 2" OF ADDITIONAL HEIGHT  
ADJUSTMENT, ADD TWO LEVELING SPACERS  
ON TOP OF THE STANDOFF. USE OF TWO  
LEVELING SPACERS NOT TO EXCEED 10% OF  
ATTACHMENT POINTS ON 10" STANDOFFS

**HD STANDOFFS ONLY:**

THE LIMITS ABOVE APPLY AT THE MAXIMUM  
STANDOFF HEIGHT DEPENDING ON THE  
STANDOFF BASE BEING USED. FOR HD  
STANDOFF ON HD STANDOFF BASE, THE  
MAXIMUM STANDOFF HEIGHT (BEFORE  
APPLYING THE LIMITATIONS ABOVE) IS 12"

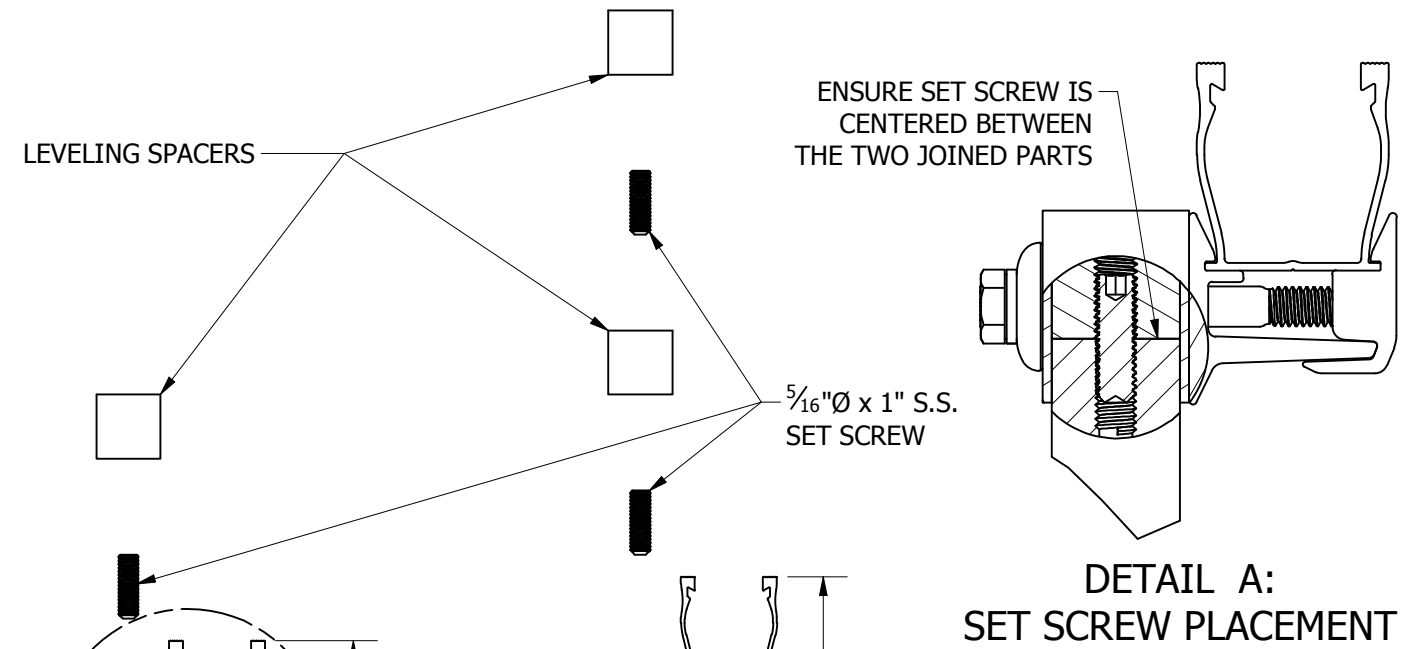
BIN:  
N/A

REVISION:			
1	5/7/2019	NEW DETAIL	MJA
1	6/18/2019	DRO-00138	MJA

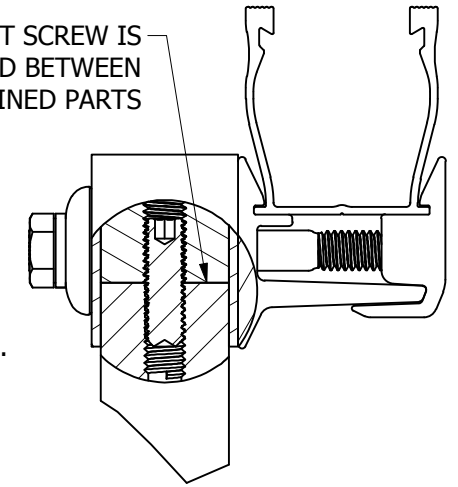


SNAPNRACK, ULTRA RAIL  
HD STANDOFF KIT

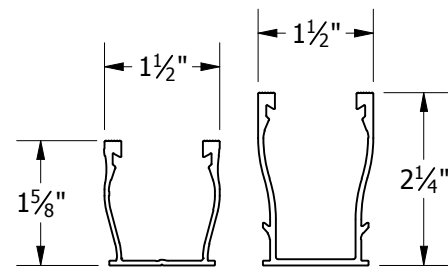
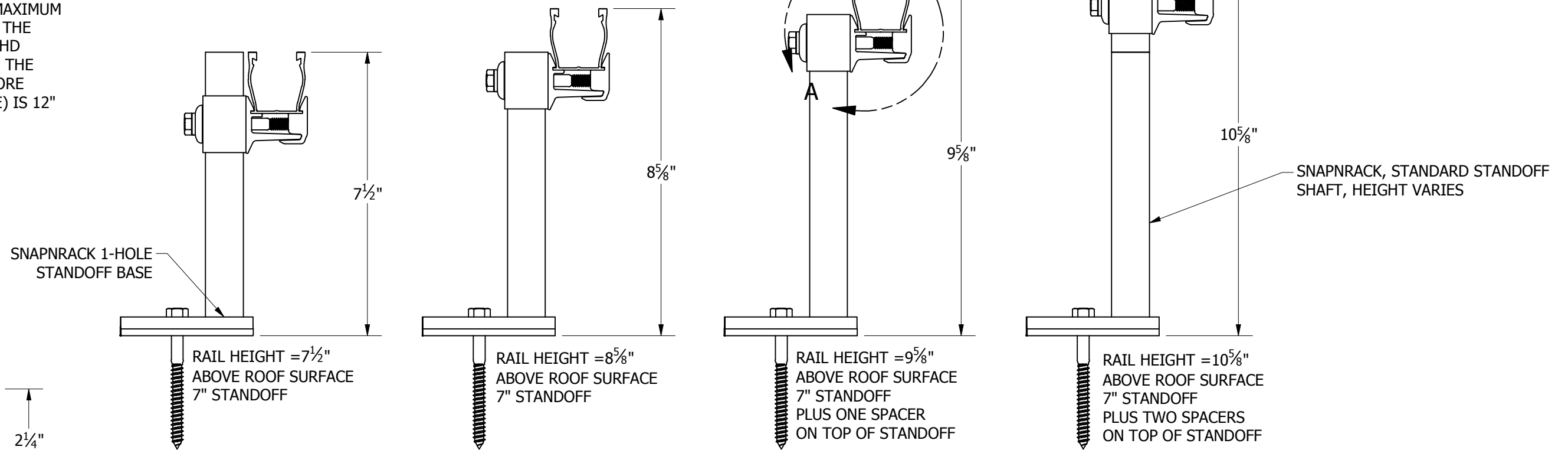
SNAPNRACK, ULTRA RAIL  
STANDARD STANDOFF KIT



ENSURE SET SCREW IS  
CENTERED BETWEEN  
THE TWO JOINED PARTS



DETAIL A:  
SET SCREW PLACEMENT



UR-40 RAIL | UR-60 RAIL

FOR USE WITH SNAPNRACK ULTRA SERIES RAILS



Sunrun South LLC  
595 MARKET STREET, 29TH FLOOR • SAN FRANCISCO, CA 94105 USA  
PHONE (415) 580-6900 • FAX (415) 580-6902  
THE INFORMATION IN THIS DRAWING IS CONFIDENTIAL AND PROPRIETARY. ANY REPRODUCTION, DISCLOSURE, OR USE THEREOF IS PROHIBITED WITHOUT THE WRITTEN CONSENT OF SUNRUN SOUTH LLC.

DESIGNER: G.MCPHEETERS  
DRAFTER: M.AFFENTRANGER  
APPROVED BY: B.PETERSON

SCALE: DNS  
DATE: 6/18/2019

DRAWING NUMBER:  
SNR-DC-00334

DESCRIPTION:  
ULTRA RAIL, COMPONENT DETAIL, LEVELING  
SPACER ON STANDOFF

REV:  
1