

THE SNAPRACK FIXED TILT IS A SIMPLE SOLUTION FOR INSTALLATIONS REQUIRING MODULE TILT BEYOND THE EXISTING ROOF SLOPE. IT IS DESIGNED FOR TILT ANGLES FROM 0°-30° ABOVE THE HORIZONTAL UTILIZING FIXED STANDOFF HEIGHTS

THE SNAPRACK FIXED TILT IS COMPATIBLE WITH THE VARIOUS SNAPRACK ROOF ATTACHMENTS SHOWN. REFER TO SPECIFIC "ATTACHMENT DETAIL"

REFER TO SNAPRACK ENGINEERING CHARTS FOR APPLICABLE RAIL SPANS. "BIN" NUMBER ON CHART SHOULD MATCH "BIN" NUMBER ON THIS DRAWING

REFER TO THE SNAPRACK INSTALLATION MANUAL FOR $\frac{5}{16}$ " Ø HARDWARE TORQUE SPECIFICATIONS

FOR ADDITIONAL SYSTEM REQUIREMENTS, INCLUDING MODULE OVERHANG, SEE "SNR-DC-00329 ULTRA RAIL, SYSTEM OVERVIEW, TYPICAL"

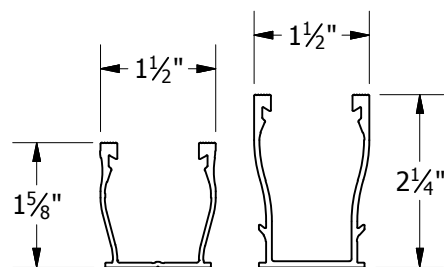
FOR LEVELING REQUIREMENTS SEE "SNR-DC-00334 ULTRA RAIL, COMPONENT DETAIL, LEVELING SPACER ON STANDOFF"

RAILS CAN BE MOUNTED UPSLOPE OR DOWNSLOPE OF THE TILT LEGS

TILT ANGLE MUST ALWAYS BE IN SAME DIRECTION AS ROOF PITCH. REVERSE TILT NOT SUPPORTED

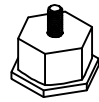
**SITE-SPECIFIC ANALYSIS IS REQUIRED IF A TALLER STANDOFF IS NECESSARY FOR PROPER INSTALLATION

**SNAPRACK STANDARD STANDOFF, 5½"

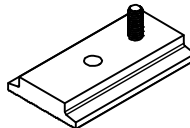


UR-40 RAIL | UR-60 RAIL
FOR USE WITH SNAPRACK ULTRA SERIES RAILS

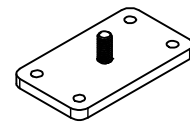
***COMPATIBLE ROOF ATTACHMENTS FOR FIXED TILT**



METAL ROOF BASE:
BIN 10
DETAIL: SNR-DC-00352
DETAIL: SNR-DC-00353



1-HOLE BASE:
BIN 10
DETAIL: SNR-DC-00348
DETAIL: SNR-DC-00349



4-HOLE BASE:
BIN 11
DETAIL: SNR-DC-00350
DETAIL: SNR-DC-00357
DETAIL: SNR-DC-00358
DETAIL: SNR-DC-00359

BIN:
***10, *11**

REVISION:		
1	5/7/2019	NEW DETAIL MJA

