

THE SNAPNRACK VARIABLE TILT WITH L FOOT IS A VERSATILE METAL ROOF SOLUTION FOR INSTALLATIONS REQUIRING MODULE TILT BEYOND THE EXISTING ROOF SLOPE. IT IS DESIGNED FOR TILT ANGLES FROM 10°-30° ABOVE THE HORIZONTAL UTILIZING HD STANDOFFS AND A REAR LEG EXTENSION

REFER TO SNAPNRACK ENGINEERING CHARTS FOR APPLICABLE RAIL SPANS. "BIN" NUMBER ON CHART SHOULD MATCH "BIN" NUMBER ON THIS DRAWING

REFER TO THE SNAPNRACK INSTALLATION MANUAL FOR 5/16"Ø HARDWARE TORQUE SPECIFICATIONS

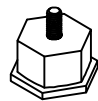
FOR ADDITIONAL SYSTEM REQUIREMENTS, INCLUDING MODULE OVERHANG, SEE "SNR-DC-00329 ULTRA RAIL, SYSTEM OVERVIEW, TYPICAL"

FOR LEVELING REQUIREMENTS SEE "SNR-DC-00332 ULTRA RAIL, COMPONENT DETAIL, LEVELING EXTENSION KIT"

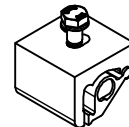
RAILS CAN BE MOUNTED UPSLOPE OR DOWNSLOPE OF THE TILT LEGS

TILT ANGLE MUST ALWAYS BE IN SAME DIRECTION AS ROOF PITCH. REVERSE TILT NOT SUPPORTED

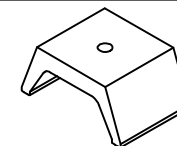
***COMPATIBLE ROOF ATTACHMENTS FOR VARIABLE TILT WITH L FOOT**



METAL ROOF BASE:
BIN 12
DETAIL: SNR-DC-00352
DETAIL: SNR-DC-00353



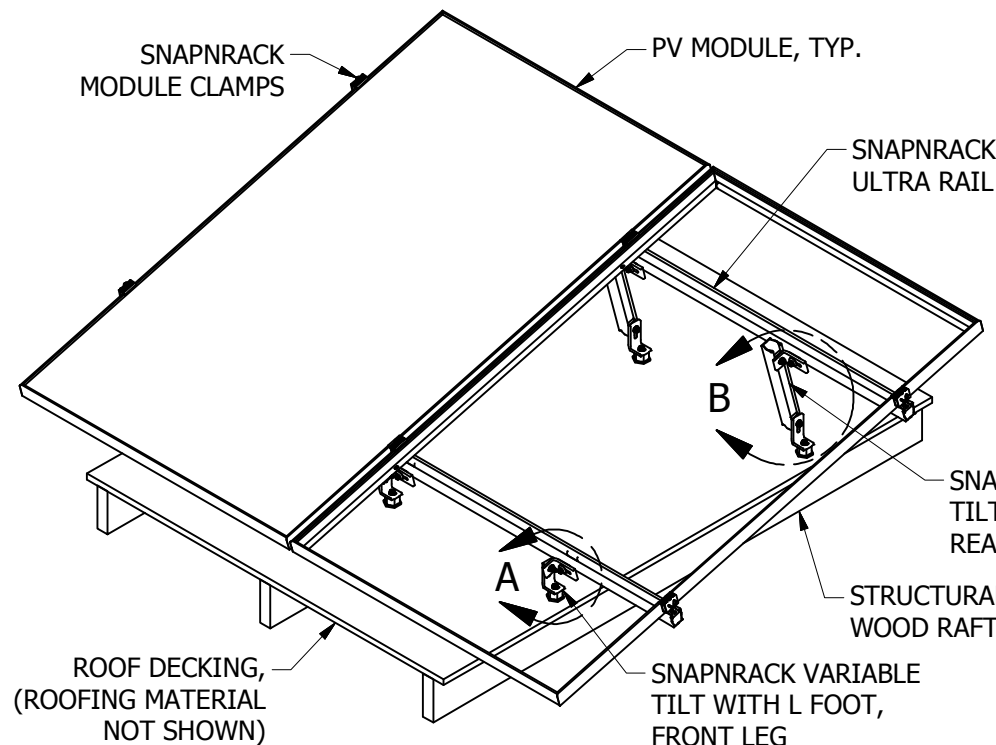
SEAM CLAMP:
BIN 13
DETAIL: SNR-DC-00342



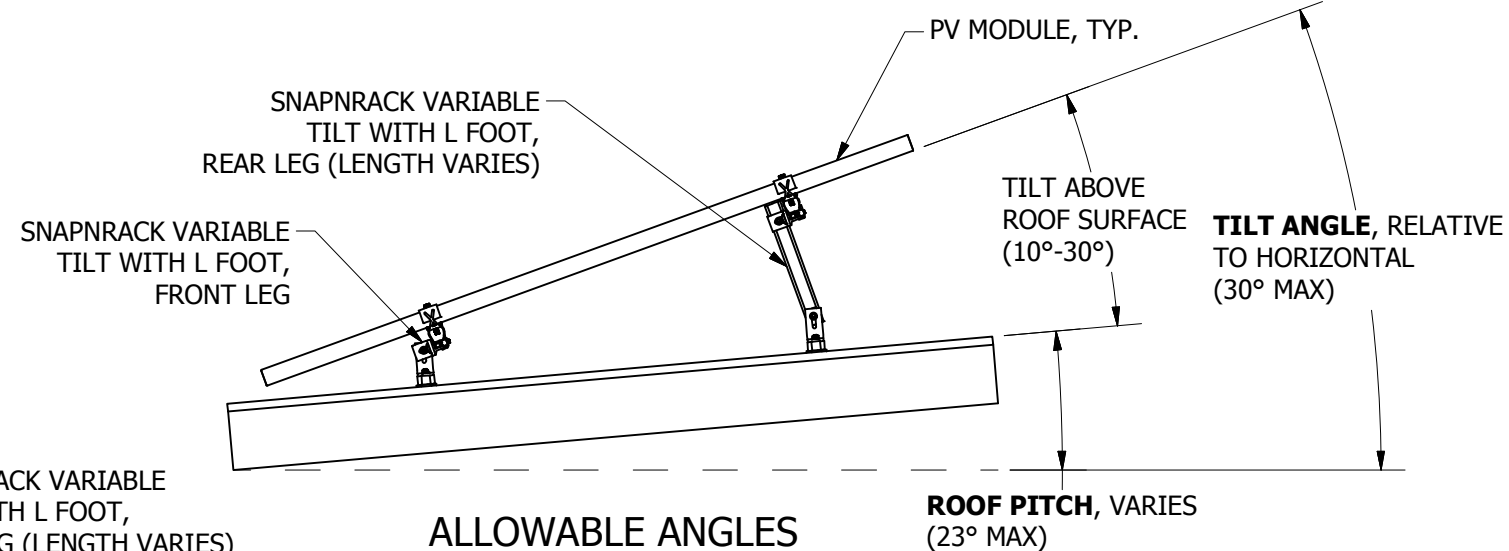
CORRUGATED STRADDLE BLOCK:
BIN 14
DETAIL: SNR-DC-00343

BIN:
***12, *13, *14**

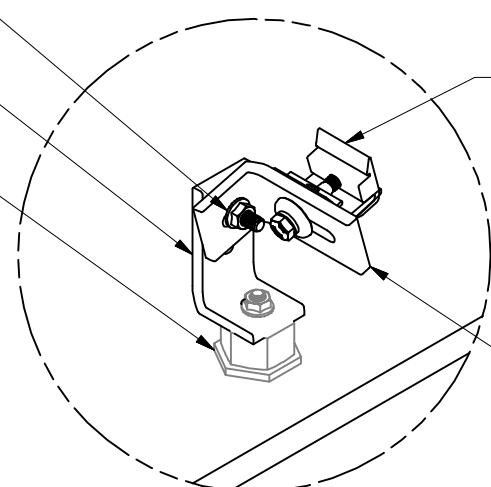
REVISION:	NEW DETAIL	MJA
1 5/7/2019		



VARIABLE TILT WITH L FOOT, INSTALLED



5/16"Ø X 1 1/4" S.S. FLANGE BOLT WITH S.S. SERRATED FLANGE NUT
SNAPNRACK ALL PURPOSE 90° L FOOT
SNAPNRACK ROOF ATTACHMENT. VARIABLE TILT WITH L FOOT IS COMPATIBLE WITH ATTACHMENTS LISTED ABOVE. REFER TO SPECIFIC SNAPNRACK "ATTACHMENT DETAIL"



DETAIL A
FRONT LEG, VARIABLE TILT WITH L FOOT (RAIL HIDDEN)

5/16"Ø X 1 1/4" S.S. SERRATED FLANGE BOLT. TORQUE TO SPECIFICATION

VARIABLE TILT REAR LEG, CUT FROM UR-40 OR UR-60 RAIL. LENGTH VARIES WITH DESIRED TILT

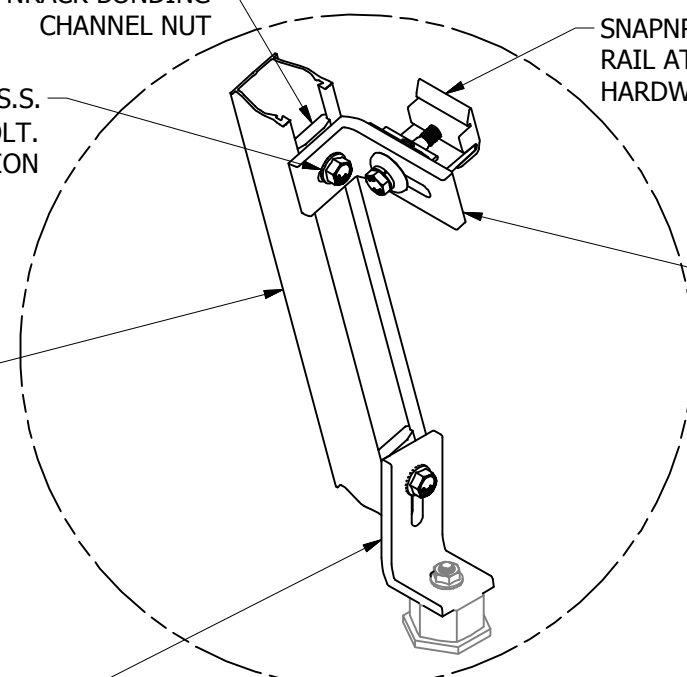
SNAPNRACK ALL PURPOSE 90° L FOOT. ALWAYS ORIENT LONG FACE FLUSH TO RAIL, AS SHOWN

SNAPNRACK ALL PURPOSE 90° L FOOT WITH BONDING CHANNEL NUT, S.S. BOLT AND LOCK WASHER. TORQUE TO SPECIFICATION

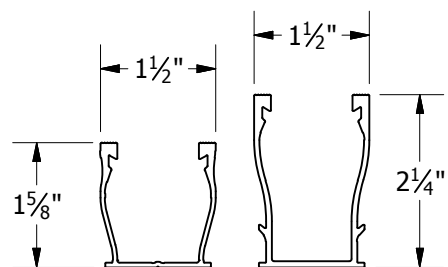
SNAPNRACK BONDING CHANNEL NUT

SNAPNRACK ULTRA RAIL ATTACHMENT HARDWARE

SNAPNRACK ALL PURPOSE 90° L FOOT. ALWAYS ORIENT LONG FACE FLUSH TO RAIL, AS SHOWN



DETAIL B
REAR LEG, VARIABLE TILT WITH L FOOT (RAIL HIDDEN)



UR-40 RAIL | UR-60 RAIL
FOR USE WITH SNAPNRACK ULTRA SERIES RAILS



Sunrun South LLC
595 MARKET STREET, 29TH FLOOR • SAN FRANCISCO, CA 94105 USA
PHONE (415) 580-6900 • FAX (415) 580-6902
THE INFORMATION IN THIS DRAWING IS CONFIDENTIAL AND PROPRIETARY. ANY REPRODUCTION, DISCLOSURE, OR USE THEREOF IS PROHIBITED WITHOUT THE WRITTEN CONSENT OF SUNRUN SOUTH LLC.

DESIGNER: G.MCHPEETERS
DRAFTER: M.AFFENTRANGER
APPROVED BY: B.PETERSON

SCALE: DNS
DATE: 5/7/2019

DRAWING NUMBER:
SNR-DC-00336

DESCRIPTION:
ULTRA RAIL, SYSTEM DETAIL, VARIABLE TILT WITH L FOOT

REV: **1**