

DESCRIPTION:
SNAPNRACK, TDS, UR-60 SPLICE

DOC NUMBER:
SNR-DC-01328

SnapNrack®

PART NUMBER(S):
242-01270, 242-01271

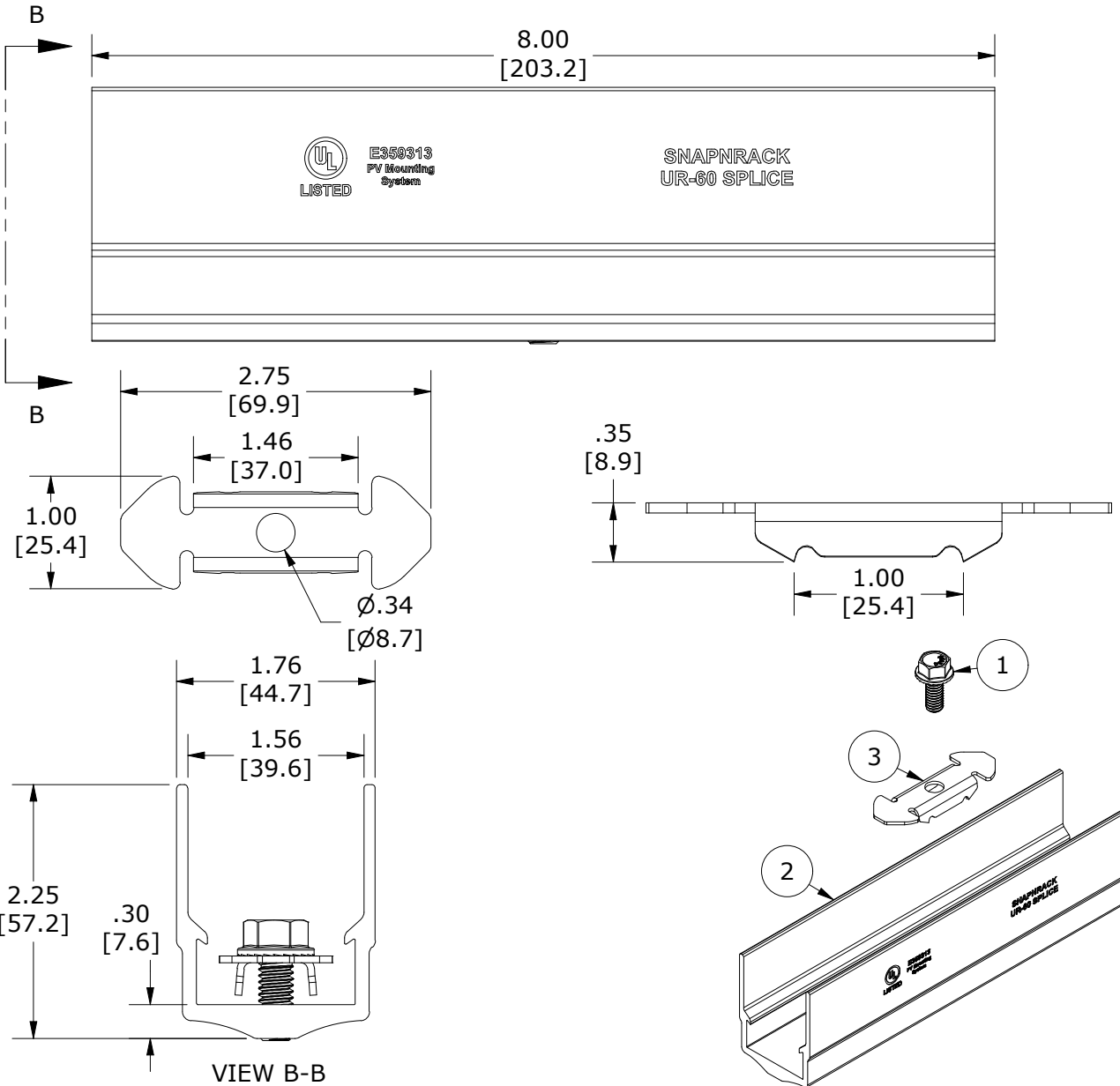
DRAWN BY:
H.WULFEKOETTER

SUNRUN INSTALLATION SERVICES INC.

UNITS: IN, LB, DEG [MM, KG, DEG] SHEET: 1:1

REV: **D** DATE: 1/24/2023

225 BUSH STREET, SUITE 1400 • SAN FRANCISCO, CA 94104 USA
PHONE (877) 732-2860 • CONTACT@SNAPNRACK.COM
THE INFORMATION IN THIS DRAWING IS CONFIDENTIAL AND PROPRIETARY. ANY REPRODUCTION, DISCLOSURE, OR USE THEREOF IS PROHIBITED WITHOUT THE WRITTEN CONSENT OF SUNRUN SOUTH LLC.



PARTS LIST

SKU	COLOR
242-01270	SILVER
242-01271	BLACK

ITEM	QTY	DESCRIPTION
1	1	BOLT, FLANGE, 5/16IN-18 X 3/4IN, CLEAR, SS
2	1	SNAPNRACK, UR-60 SPLICE, SLEEVE, CLEAR / BLACK
3	1	SNAPNRACK, UR-60 SPLICE BONDING BRIDGE, SS

MATERIALS: 6000 SERIES ALUMINUM, STAINLESS STEEL

DESIGN LOAD (LBS): FULL UR-60 RAIL CAPACITY

ULTIMATE LOAD (LBS): N/A

TORQUE SPECIFICATION: 12 FT-LBS

CERTIFICATION: UL 2703, FILE E359313

WEIGHT (LBS): 0.72