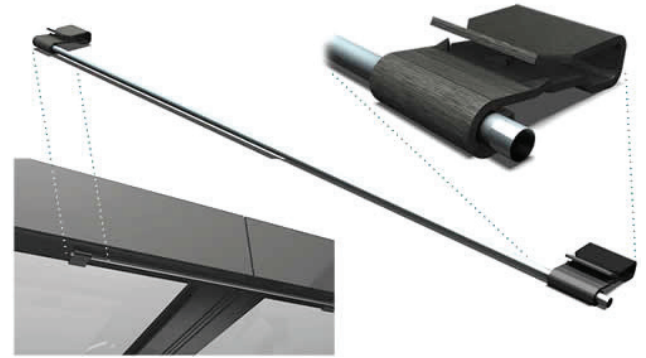


SnapNrack Ultra Rail with DynoRaxx DynoBond

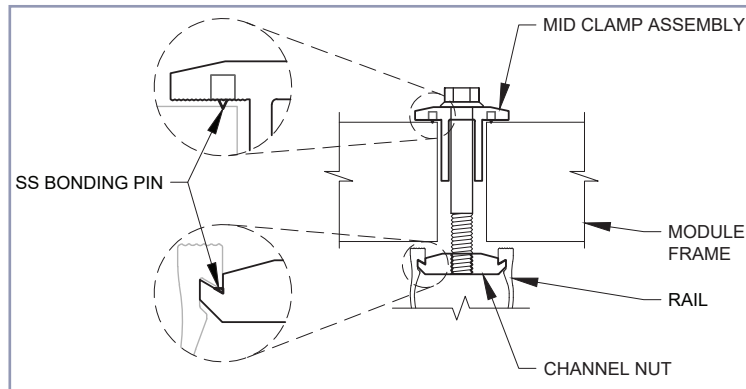
Overview

SnapNrack approves the use of the DynoRaxx DynoBond system with the Ultra Rail racking system. The DynoBond system utilizes a jumper that creates a bonding path between two modules, or between a module and rail, and is to be installed between module rows. It can also be used to bond modules to rails, and should be installed on flat portions of the rail (see below). Bonding along module rows is provided by SnapNrack module clamps and rail splices. As a result, *full bonding of the system is not achieved until modules are installed.*

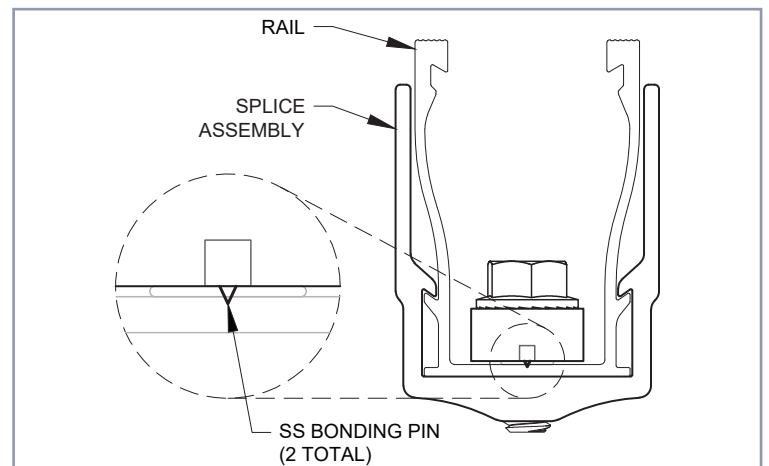
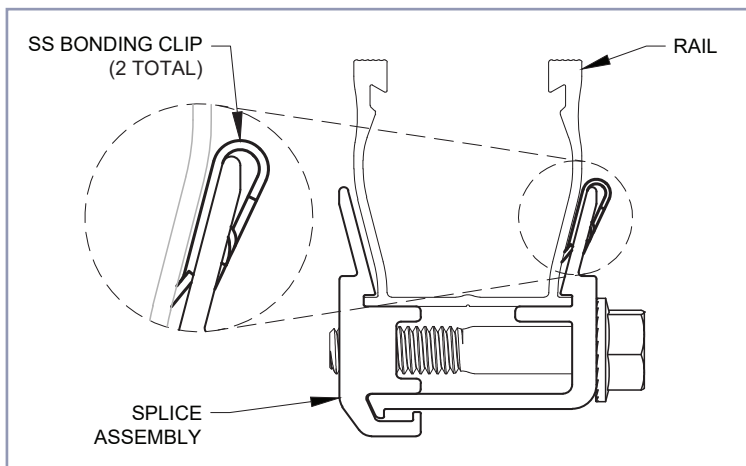


DynoBond Assembly

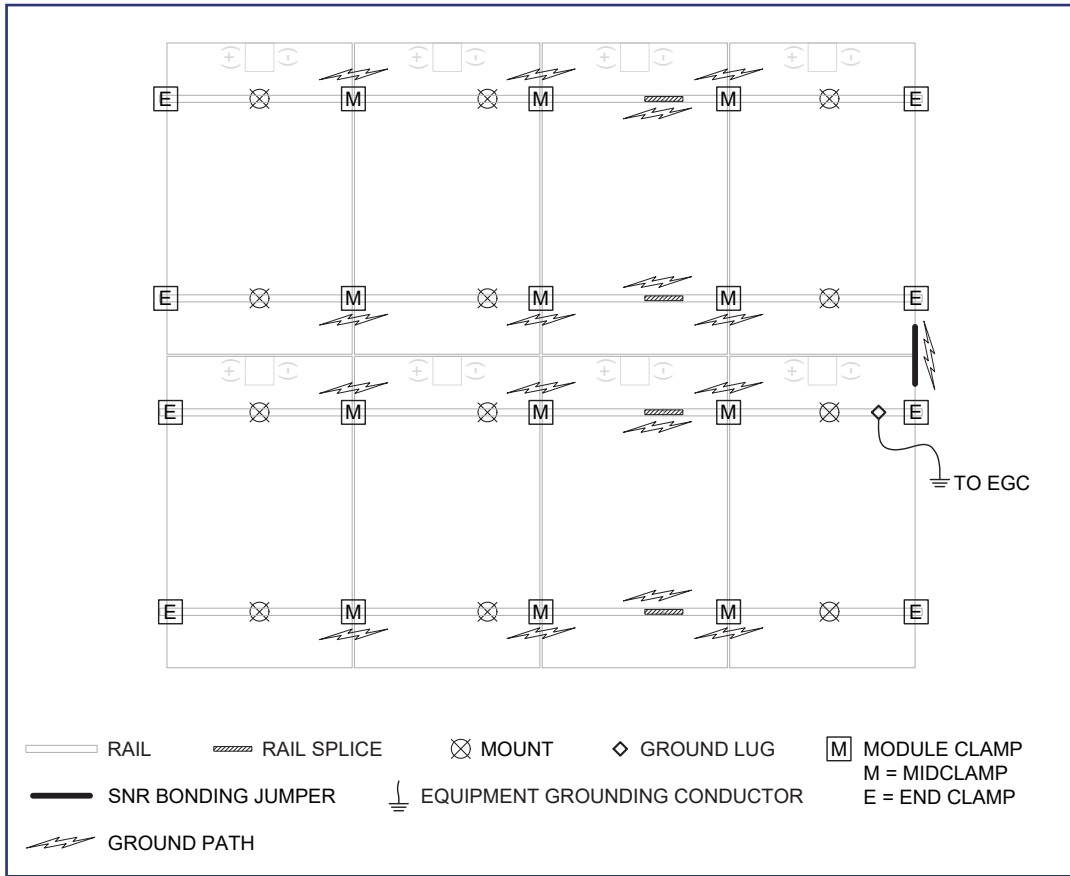
DynoBond should always be installed per installation instructions provided by DynoRaxx.



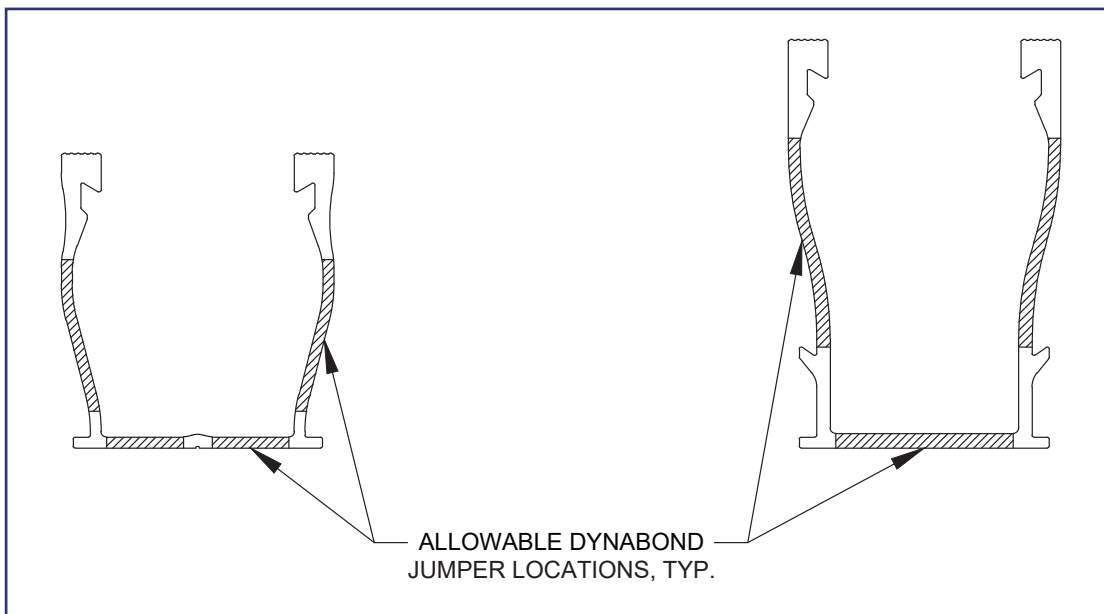
SnapNrack Bonding Module Clamps



SnapNrack Bonding Ultra Rail Splices



Bonding Schematic with Ultra Rail and DynoBond



Allowable Rail Locations for DynoBond Installation