

SnapNrack Series 200 & 2" Vertical Pipe Compatibility

Overview

The SnapNrack Series 200 Ground Mount System is an efficient and visually appealing designed for small to medium size ground mount projects. The system attaches easily to a standard schedule 40 or 80 galvanized 1.5" pipe structure with "Snap-In" bonding pipe clamps and configures easily to a desired tilt (0- 45 degrees). Using a standard three to four-module high assembly, the system is flexible while optimizing materials and minimizing the system footprint. SnapNrack Series 200 system has been evaluated by Underwriters Laboratories (UL) and listed to UL Standard 2703 for Grounding/Bonding.



SnapNrack systems, when installed in accordance with the installation manual and stamped engineering, will be structurally adequate for the specific installation site and will meet the local and International Building Code. Systems will also be bonded to ground, under SnapNrack's UL 2703 Listing. The SnapNrack installation system is a set of engineered components that can be assembled into a wide variety of solar mounting structures. It is designed to be installed by qualified solar installation technicians. With SnapNrack you will be able to solve virtually any PV module mounting challenge.

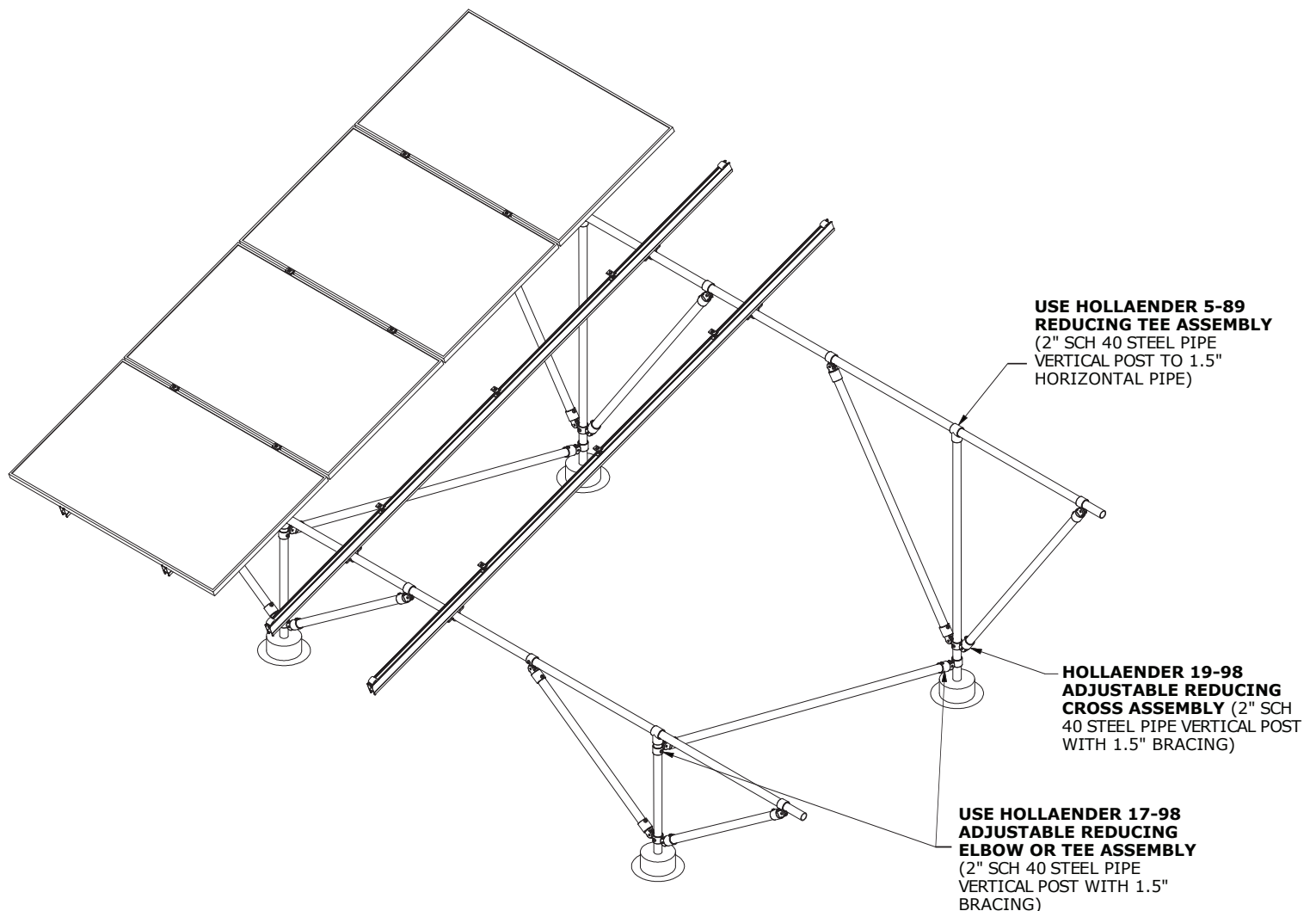
SnapNrack Series 200 Ground Mount has been designed and engineered using standard 1.5" galvanized steel pipe. However, the vertical pipe can be replaced with standard 2" galvanized steel pipe if required by an alternative foundation system.

Installations utilizing alternative foundations not listed in the Series 200 stamped engineering, available for all 50 states, may require analysis by licensed engineering professional. If there are any adverse soil conditions present, recommendations for the foundation design should be obtained through a licensed Geotechnical Engineer who is familiar with local conditions. A soils report is widely considered the most reliable and accurate method for determining the most efficient type and dimensions of foundation for any ground-mounted array system. Soils reports can be obtained through a Geotechnical Engineer.



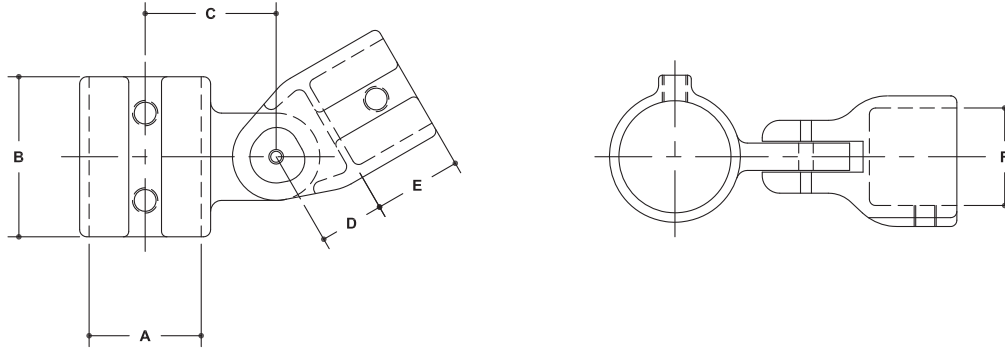
Materials Required for installing SnapNrack S200 Ground Mount with 2" vertical pipe. (All bracing must be installed per the standard S200 engineering. See the online SnapNrack Resources for S200.)

- 1 2" Schedule 40, or 80 Steel Pipe**
- 2 1/4" x 1" Self Drilling Fasteners (per 5-89 Tee installed 90° from set screw)**
- 3 Hollaender Fittings:**
 - 5-89 Reducing Tee
 - 17-98 Adjustable Reducing Elbow or Tee Assembly
 - 19-98 Adjustable Reducing Cross Assembly



Required Hollaender Fitting Details*

NOTE: DIMENSIONS LOCATED IN BOXES ARE COMMON
SETBACK DIMENSIONS FOR EACH FITTING

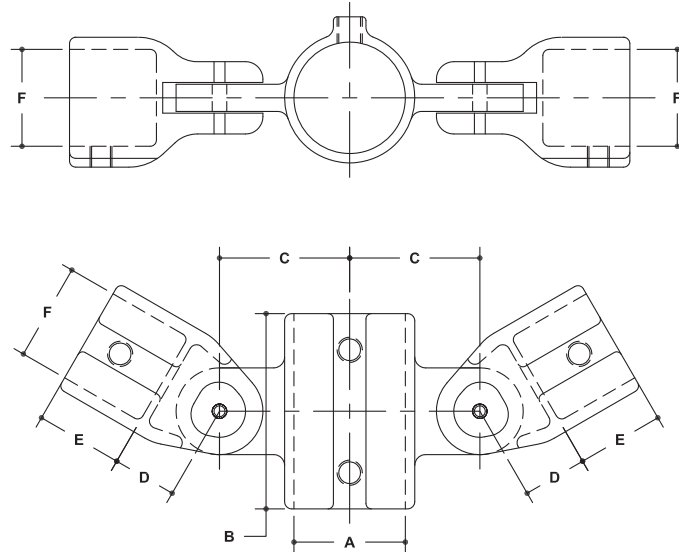


#17 Adjustable Reducing Elbow or Tee Assembly

SCALE: HALF

ENGLISH UNITS (Inches)								METRIC UNITS (mm)							
PIPE SIZE	A	B	C	D	E	F	G	PIPE SIZE	A	B	C	D	E	F	G
2" x 1½"	2.41	3.88	2.63	1.11	1.73	1.93		2" x 1½"	61	98	67	28	44	49	
1½" x 1¼"	1.93	2.75	2.25	1.13	1.44	1.68		1½" x 1¼"	49	70	57	29	37	43	
1¼" x 1"	1.68	2.38	2.06	0.86	1.14	1.33		1¼" x 1"	43	60	52	22	29	34	
1" x ¾"	1.33	2.00	1.63	0.97	0.97	1.07		1" x ¾"	34	51	41	25	25	27	

NOTE: DIMENSIONS LOCATED IN BOXES ARE COMMON
SETBACK DIMENSIONS FOR EACH FITTING



#19 Adjustable Reducing Cross Assembly

SCALE: HALF

ENGLISH UNITS (Inches)								METRIC UNITS (mm)							
PIPE SIZE	A	B	C	D	E	F	G	PIPE SIZE	A	B	C	D	E	F	G
2" x 1½"	2.40	3.88	2.63	1.11	1.73	1.93		2" x 1½"	61	99	67	28	44	49	
1½" x 1¼"	1.93	3.38	2.25	1.13	1.44	1.68		1½" x 1¼"	49	86	57	29	37	43	
1¼" x 1"	1.68	2.75	1.94	0.86	1.14	1.33		1¼" x 1"	43	70	49	22	29	34	
1" x ¾"	1.33	2.38	1.63	0.97	0.97	1.07		1" x ¾"	34	60	41	25	25	27	

Required Hollaender Fitting Details*

