

SNAPNRACK UR SPEEDSEAL DECKFOOT FOR COMPOSTION ROOF MOUNTING ONTO WOOD RAFTER

REFER TO SNAPNRACK ENGINEERING CHARTS FOR APPLICABLE RAIL SPANS. "BIN" NUMBER ON CHART SHOULD MATCH "BIN" NUMBER ON THIS DRAWING

(X2) #14 FULLY THREADED WOOD SCREWS, S.S. MUST PENETRATE A MIN. OF 1½" INTO STRUCTURAL MEMBER. (X2) #14 FULLY THREADED WOOD SCREWS, S.S. MUST EMBED FULLY INTO WOOD DECK

REFER TO SNAPNRACK INSTALLATION MANUAL FOR 5/16"Ø HARDWARE TORQUE SPECIFICATIONS

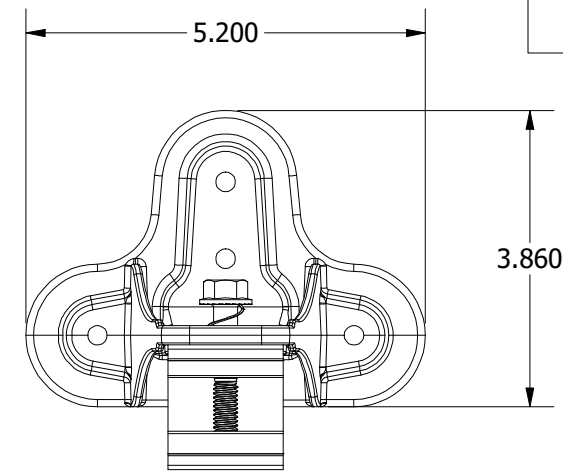
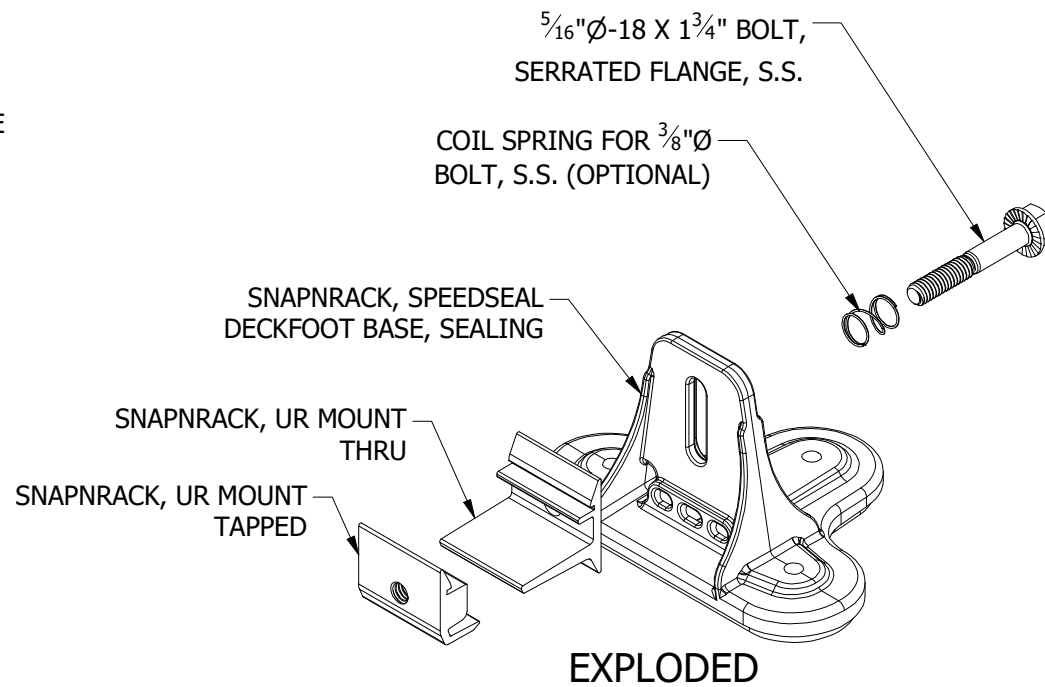
SNAPNRACK SPEEDSEAL DECKFOOT CAN MOUNT IN ANY ORIENTATION ON THE ROOF

RAIL CAN MOUNT ON BOTH SIDES OF SPEEDSEAL DECKFOOT

FOR ADDITIONAL LEVELING DETAILS, REFER TO SNAPNRACK DETAIL DRAWING "SNR-DC-00447 ULTRA RAIL, COMPONENT DETAIL, ULTRA RAIL LEVELING SPACER"

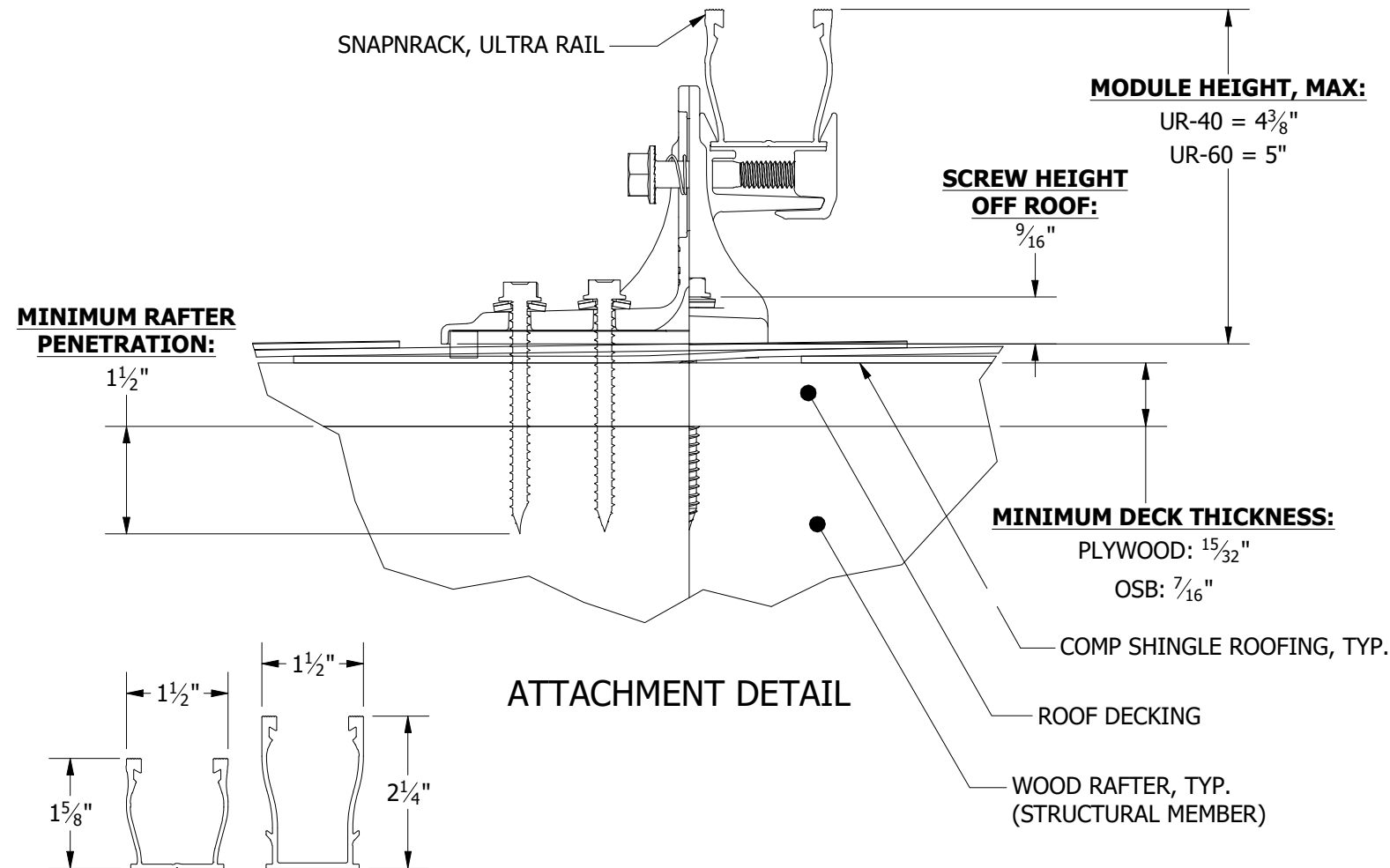
BIN:
N/A

REVISION:			
1	1/13/2021	NEW DETAIL	MJA
2	4/5/2021	2PC CLAMP	MJA
B	8/2/2021	DC000595	MJA

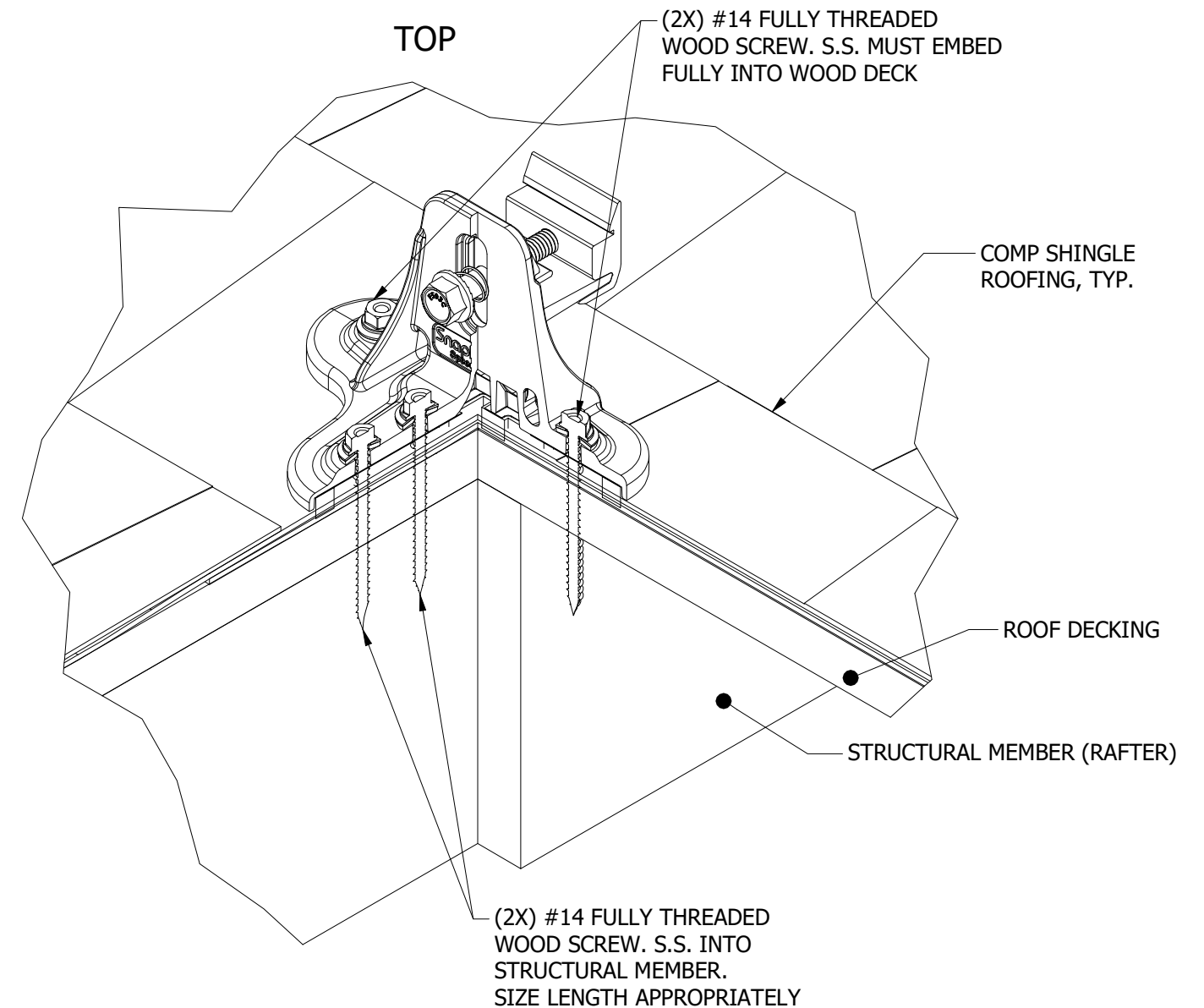


TOP

(2X) #14 FULLY THREADED WOOD SCREW. S.S. MUST EMBED FULLY INTO WOOD DECK



ATTACHMENT DETAIL



INSTALLATION OVERVIEW

UR-40 RAIL | UR-60 RAIL
FOR USE WITH SNAPNRACK ULTRA SERIES RAILS



Sunrun South LLC
595 MARKET STREET, 29TH FLOOR • SAN FRANCISCO, CA 94105 USA
PHONE (415) 580-6900 • FAX (415) 580-6902
THE INFORMATION IN THIS DRAWING IS CONFIDENTIAL AND PROPRIETARY. ANY REPRODUCTION, DISCLOSURE, OR USE THEREOF IS PROHIBITED WITHOUT THE WRITTEN CONSENT OF SUNRUN SOUTH LLC.

DESIGNER: M.AFFENTRANGER
DRAFTER: M.AFFENTRANGER
APPROVED BY: W.ARBUCKLE

SCALE: DNS
DATE: 8/2/2021

DRAWING NUMBER:
SNR-DC-00449

DESCRIPTION:
ULTRA RAIL, ATTACHMENT DETAIL, UR SPEEDSEAL DECKFOOT TO RAFTER

REV:
B