

SNAPNRACK ULTRA RAIL STANDARD STANDOFF ON OMNIBASE FOR MOUNTING TO VARIOUS ROOF TYPES

REFER TO SNAPNRACK ENGINEERING CHARTS FOR APPLICABLE RAIL SPANS. "BIN" NUMBER ON CHART SHOULD MATCH "BIN" NUMBER ON THIS DRAWING

(2X) 1/4"Ø S.S. LAG SCREWS MUST EMBED A MIN. OF 1 1/4" EACH INTO STRUCTURAL MEMBER. REFER TO JOIST MANUFACTURER'S SPECIFICATION FOR LIMITATIONS

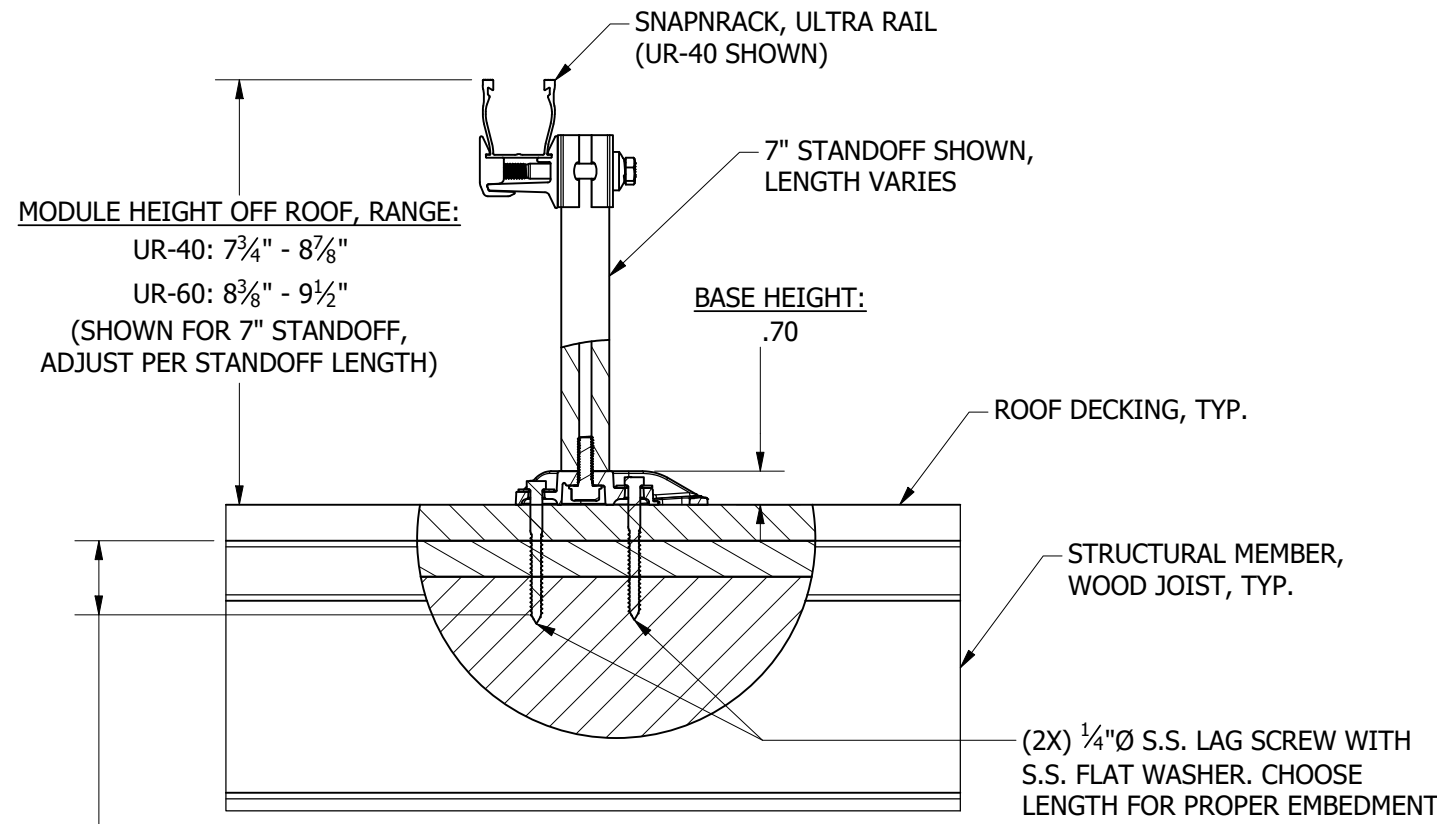
REFER TO SNAPNRACK INSTALLATION MANUAL FOR 5/16"Ø HARDWARE TORQUE SPECIFICATIONS

SNAPNRACK OMNIBASE CAN MOUNT IN ANY ORIENTATION ON THE ROOF AND RAILS CAN MOUNT ON ANY SIDE OF THE STANDOFF POST

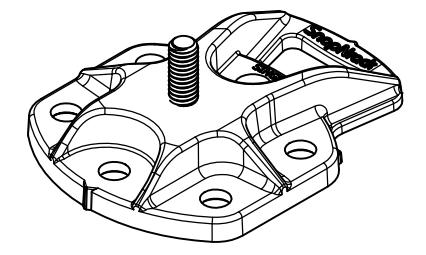
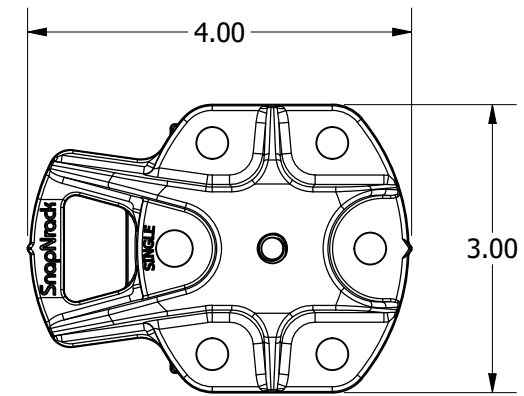
FOR ADDITIONAL LEVELING DETAILS, REFER TO SNAPNRACK DETAIL DRAWINGS SNR-DC-00334 AND SNR-DC-00447

BIN:  
5, 10

| REVISION: |            |            |     |
|-----------|------------|------------|-----|
| 1         | 6/22/2021  | NEW DETAIL | MJA |
| A         | 8/2/2021   | DC000595   | MJA |
| B         | 10/25/2021 | DC000727   | MJA |
| C         | 4/7/2023   | DC002278   |     |
|           |            |            |     |
|           |            |            |     |



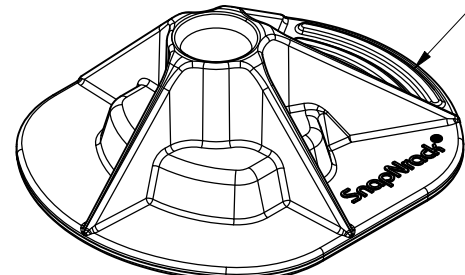
1 1/4" MIN. EMBEDMENT, EACH, INTO WOOD JOIST. REFER TO JOIST MANUFACTURER SPECIFICATION FOR LIMITATIONS



OMNIBASE, TOP

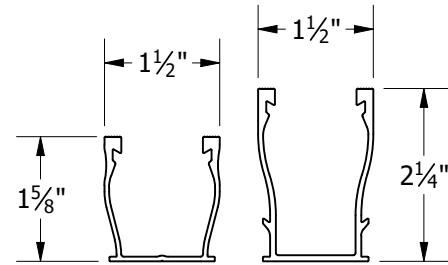
OMNIBASE

ATTACHMENT DETAIL



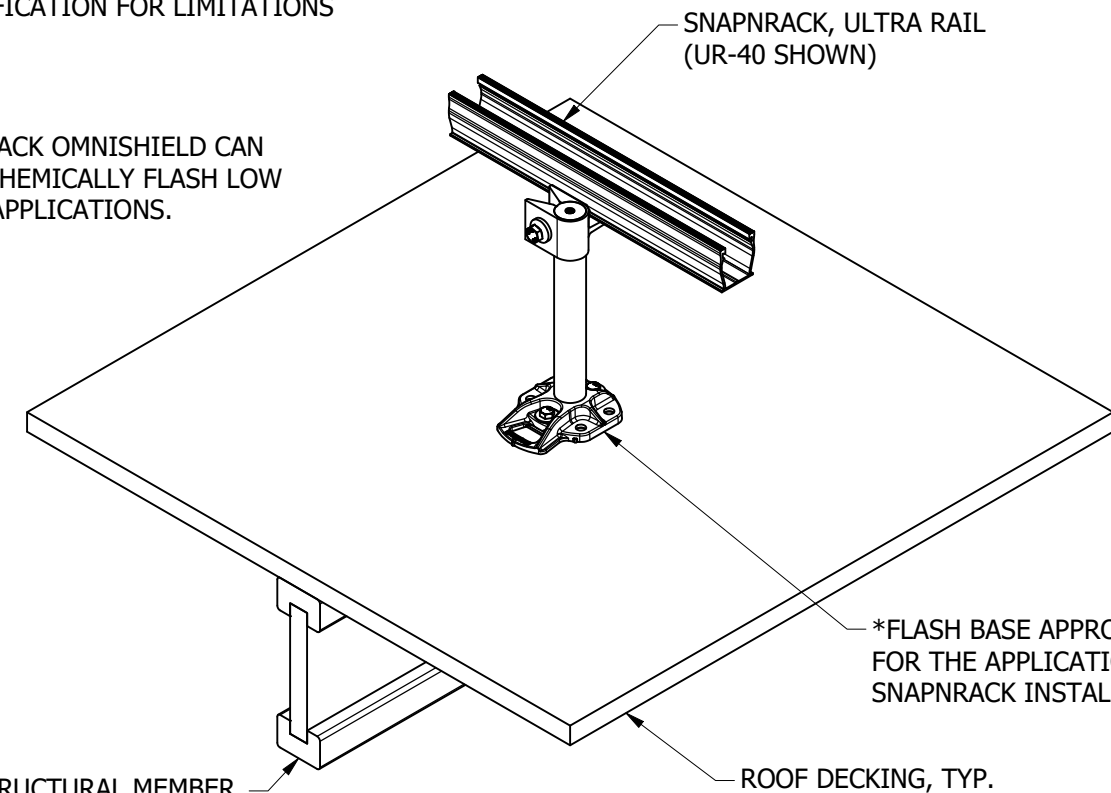
OMNISHIELD

\*THE SNAPNRACK OMNISHIELD CAN BE USED TO CHEMICALLY FLASH LOW SLOPE ROOF APPLICATIONS.



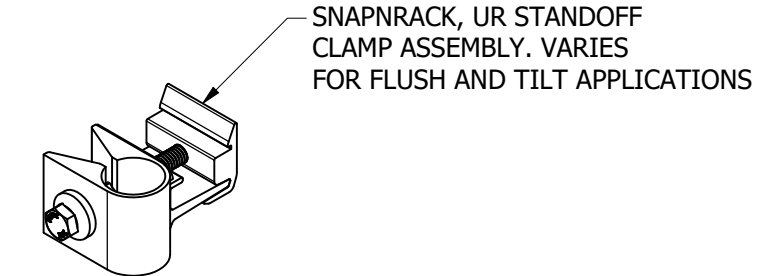
UR-40 RAIL | UR-60 RAIL

FOR USE WITH SNAPNRACK ULTRA SERIES RAILS

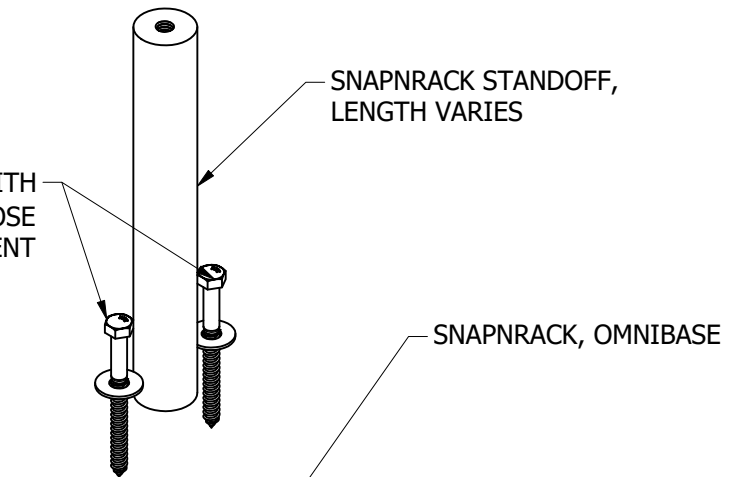


INSTALLED

\*FLASH BASE APPROPRIATELY FOR THE APPLICATION, REFER TO SNAPNRACK INSTALLATION MANUAL

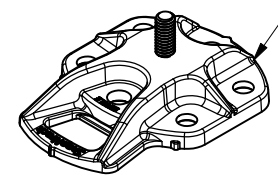


SNAPNRACK, UR STANDOFF CLAMP ASSEMBLY. VARIES FOR FLUSH AND TILT APPLICATIONS



SNAPNRACK STANDOFF, LENGTH VARIES

(2X) 1/4"Ø S.S. LAG SCREW WITH S.S. FLAT WASHER. CHOOSE LENGTH FOR PROPER EMBEDMENT



SNAPNRACK, OMNIBASE

EXPLODED



Sunrun South LLC  
595 MARKET STREET, 29TH FLOOR • SAN FRANCISCO, CA 94105 USA  
PHONE (415) 580-6900 • FAX (415) 580-6902  
THE INFORMATION IN THIS DRAWING IS CONFIDENTIAL AND PROPRIETARY. ANY REPRODUCTION, DISCLOSURE, OR USE THEREOF IS PROHIBITED WITHOUT THE WRITTEN CONSENT OF SUNRUN SOUTH LLC.

DESIGNER: M.AFFENTRANGER  
DRAFTER: M.AFFENTRANGER  
APPROVED BY: E.FERGUSON

SCALE: DNS  
DATE: 4/7/2023

DRAWING NUMBER:  
SNR-DC-01251

DESCRIPTION:  
ULTRA RAIL, ATTACHMENT DETAIL, OMNIBASE WITH STANDOFF TO TJI JOIST

REV:  
C