

SNAPNRACK ULTRA RAIL STANDARD STANDOFF ON OMNIBASE FOR MOUNTING TO VARIOUS ROOF TYPES

REFER TO SNAPNRACK ENGINEERING CHARTS FOR APPLICABLE RAIL SPANS. "BIN" NUMBER ON CHART SHOULD MATCH "BIN" NUMBER ON THIS DRAWING

FOR SNAPNRACK'S STANDARD ENGINEERING TO APPLY, CONCRETE ANCHOR(S) MUST HAVE SUFFICIENT DIAMETER AND EMBEDMENT TO ACHIEVE THE FOLLOWING **TOTAL MIN. ALLOWABLE CAPACITY:**

- WITHDRAWAL: **532 LBS**
- SHEAR: **270 LBS**

CAPACITIES LOWER THAN THIS WILL REQUIRE SITE SPECIFIC ENGINEERING

REFER TO SNAPNRACK INSTALLATION MANUAL FOR $\frac{5}{16}$ "Ø HARDWARE TORQUE SPECIFICATIONS

SNAPNRACK OMNIBASE CAN MOUNT IN ANY ORIENTATION ON THE ROOF

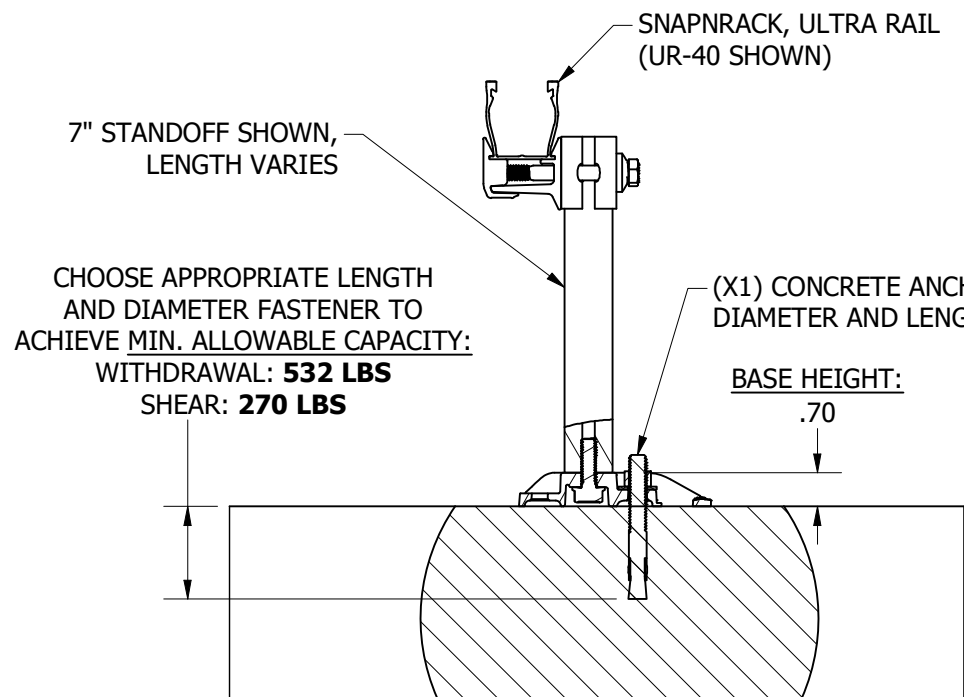
RAILS CAN MOUNT ON ANY SIDE OF THE STANDOFF POST

FOR LEVELING DETAILS, REFER TO SNAPNRACK DETAIL DRAWINGS SNR-DC-00334 AND SNR-DC-00447

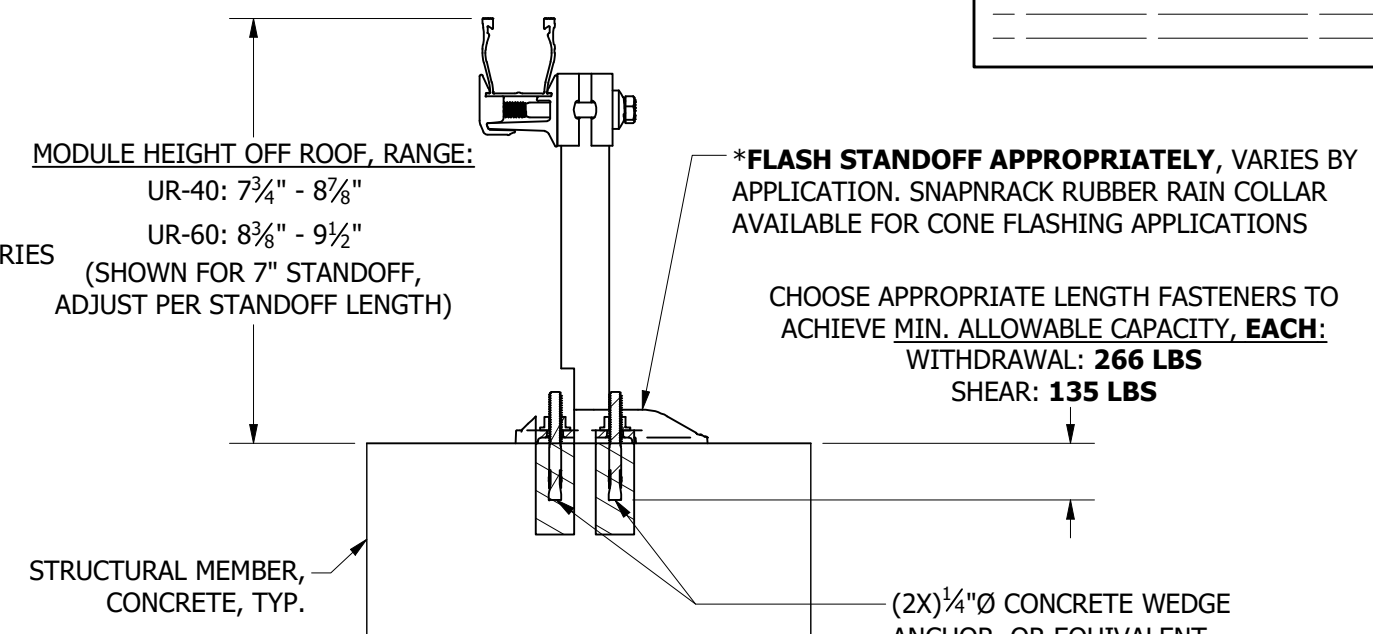
*A Poured SEALANT-STYLE FLASHING MAY BE USED WHEN INSTALLED PER THE MANUFACTURER'S SPECIFICATIONS

BIN: **5**

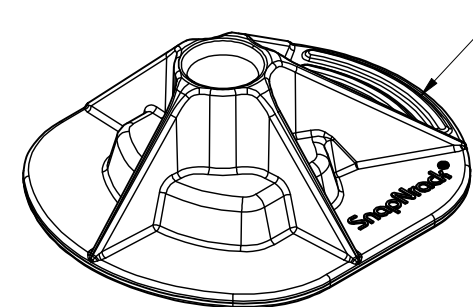
REVISION:			
1	6/22/2021	NEW DETAIL	MJA
A	8/2/2021	DC000595	MJA
B	10/25/2021	DC000727	MJA
C	3/29/2023	DC001948	MJA



ATTACHMENT DETAIL, (1X) CONCRETE ANCHOR

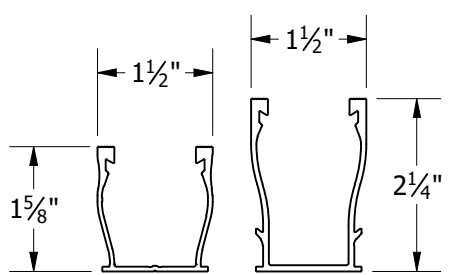


ATTACHMENT DETAIL, (2X) 1/4"Ø CONCRETE ANCHOR



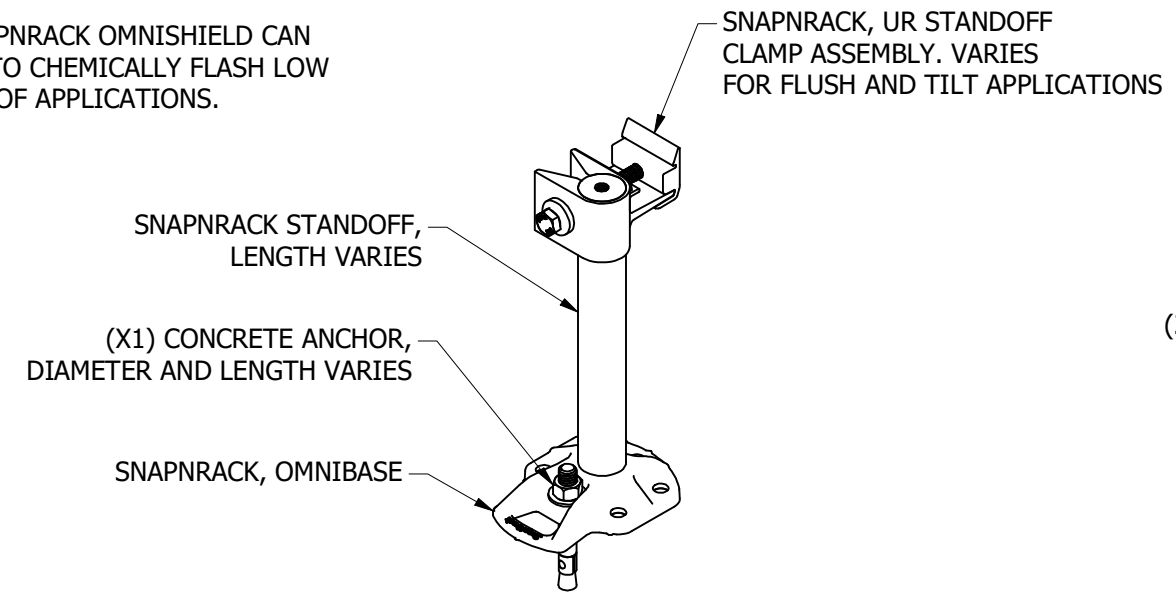
*THE SNAPNRACK OMNISHIELD CAN BE USED TO CHEMICALLY FLASH LOW SLOPE ROOF APPLICATIONS.

OMNISHIELD (REFER TO SNR-DC-001255)

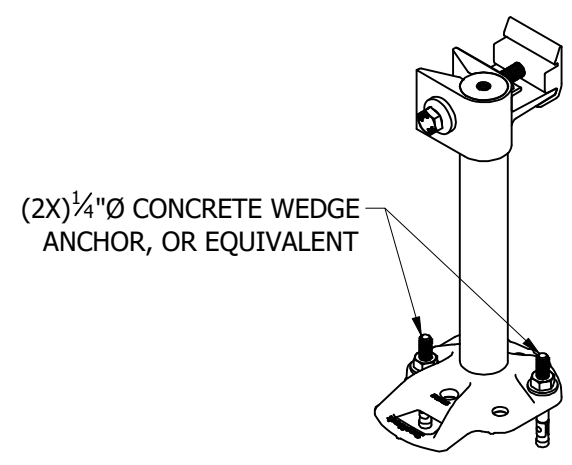


UR-40 RAIL | UR-60 RAIL

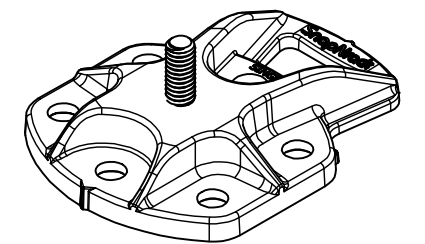
FOR USE WITH SNAPNRACK ULTRA SERIES RAILS



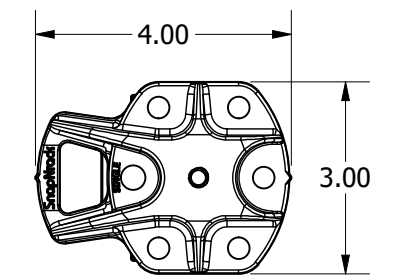
INSTALLED (1X) CONCRETE ANCHOR



INSTALLED (2X) 1/4"Ø CONCRETE ANCHOR



SNAPNRACK OMNIBASE



OMNIBASE, TOP



Sunrun South LLC
595 MARKET STREET, 29TH FLOOR • SAN FRANCISCO, CA 94105 USA
PHONE (415) 580-6900 • FAX (415) 580-6902
THE INFORMATION IN THIS DRAWING IS CONFIDENTIAL AND PROPRIETARY. ANY REPRODUCTION, DISCLOSURE, OR USE THEREOF IS PROHIBITED WITHOUT THE WRITTEN CONSENT OF SUNRUN SOUTH LLC.

DESIGNER: M.AFFENTRANGER
DRAFTER: M.AFFENTRANGER
APPROVED BY: W.ARBUCKLE

SCALE: DNS
DATE: 3/29/2023

DRAWING NUMBER: SNR-DC-01253

DESCRIPTION: ULTRA RAIL, ATTACHMENT DETAIL, OMNIBASE WITH STANDOFF TO CONCRETE

REV: **C**