

SEE ENGINEERING TABLES FOR PIER DEPTHS AND SPAN LIMITATIONS.

UNLESS OTHERWISE SPECIFIED IN ENGINEERING DOCS, THE FOLLOWING VALUES APPLY.

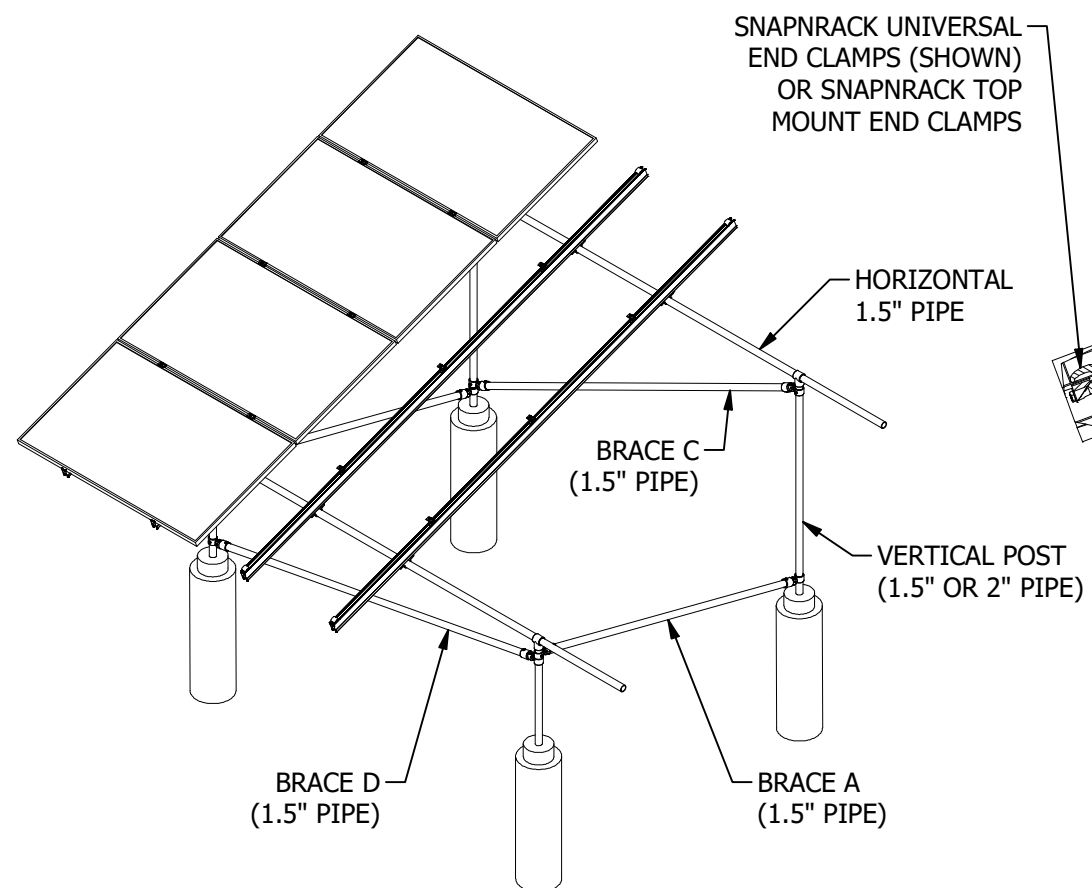
MAX RAIL LENGTH (RL) IS 214"

MAX RAIL SPAN (RS):
 3-HIGH = 6'-0"
 4-HIGH = 8'-6"
 5-HIGH = 11'-0"

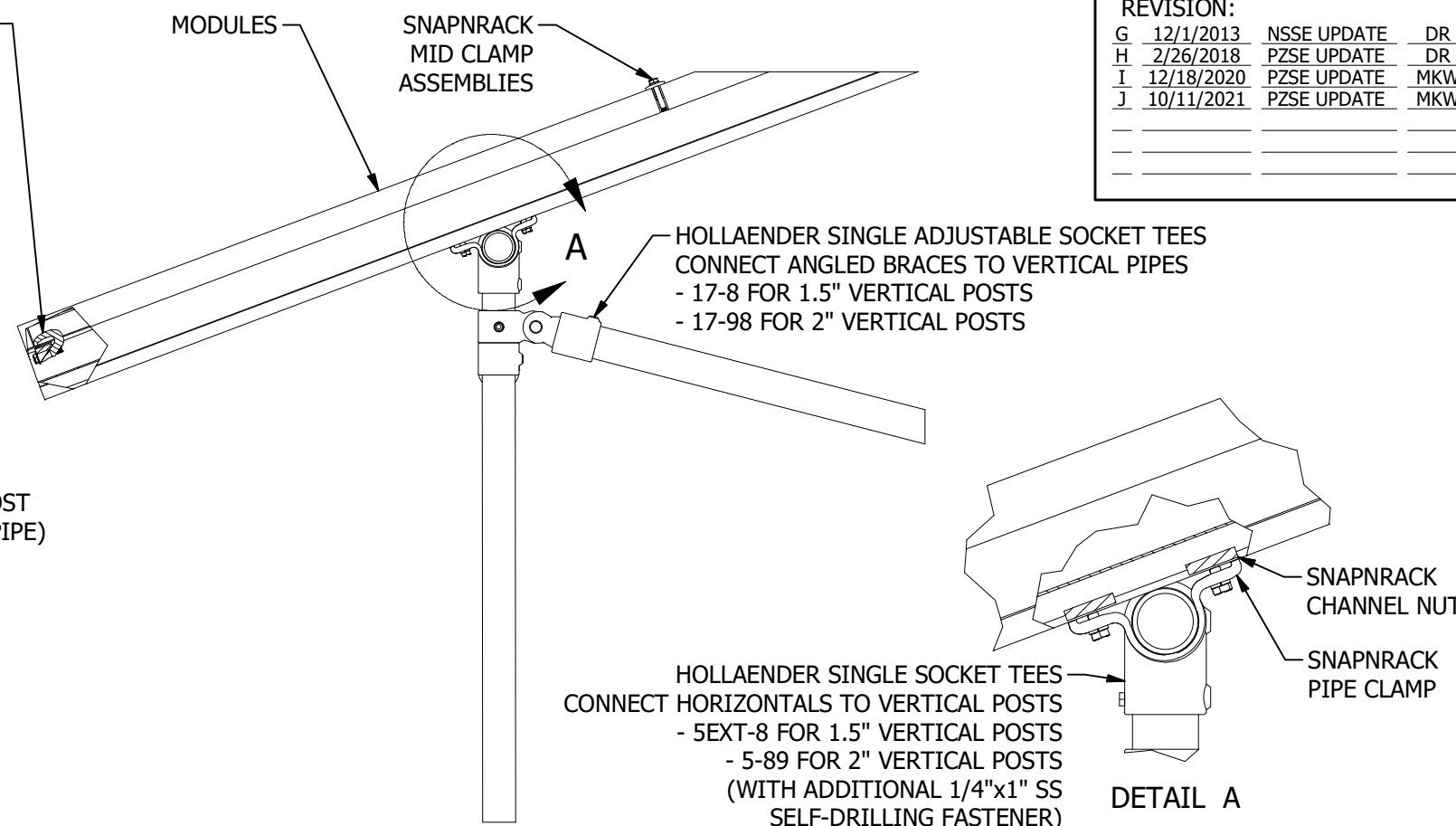
MAX RAIL OVERHANG (RO):
 3-HIGH = 29"
 4-HIGH = 35"
 5-HIGH = 41"

MAXIMUM MODULE WEIGHT IS 65 LBS

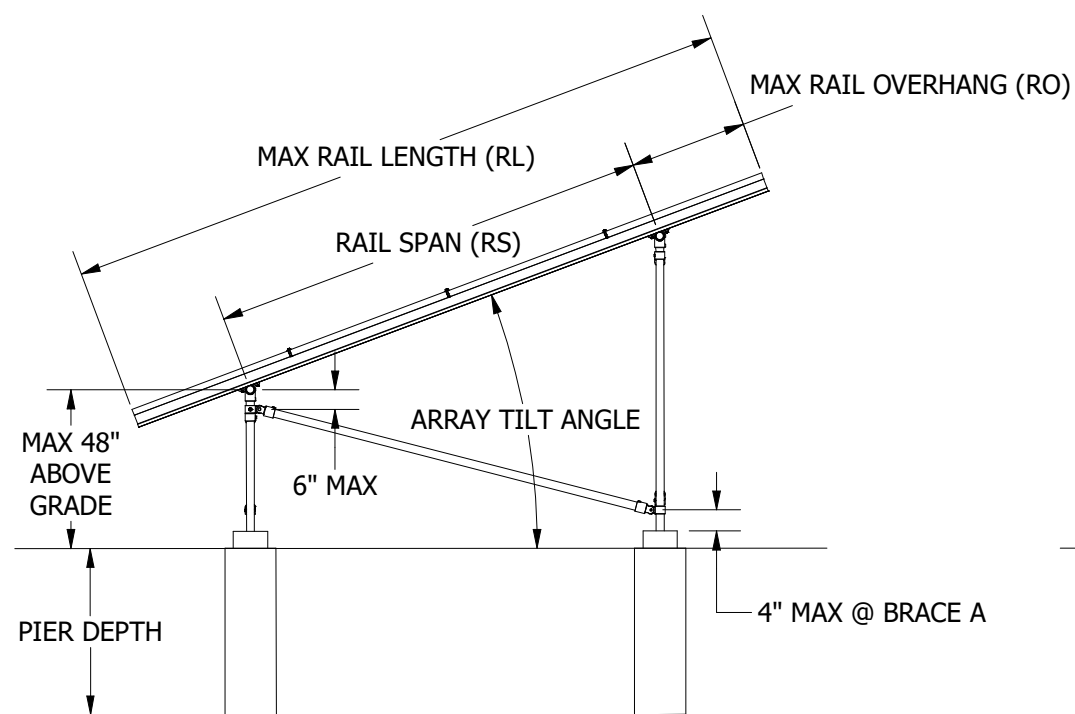
REVISION:		
G	12/1/2013	NSSE UPDATE DR
H	2/26/2018	PZSE UPDATE DR
I	12/18/2020	PZSE UPDATE MKW
J	10/11/2021	PZSE UPDATE MKW



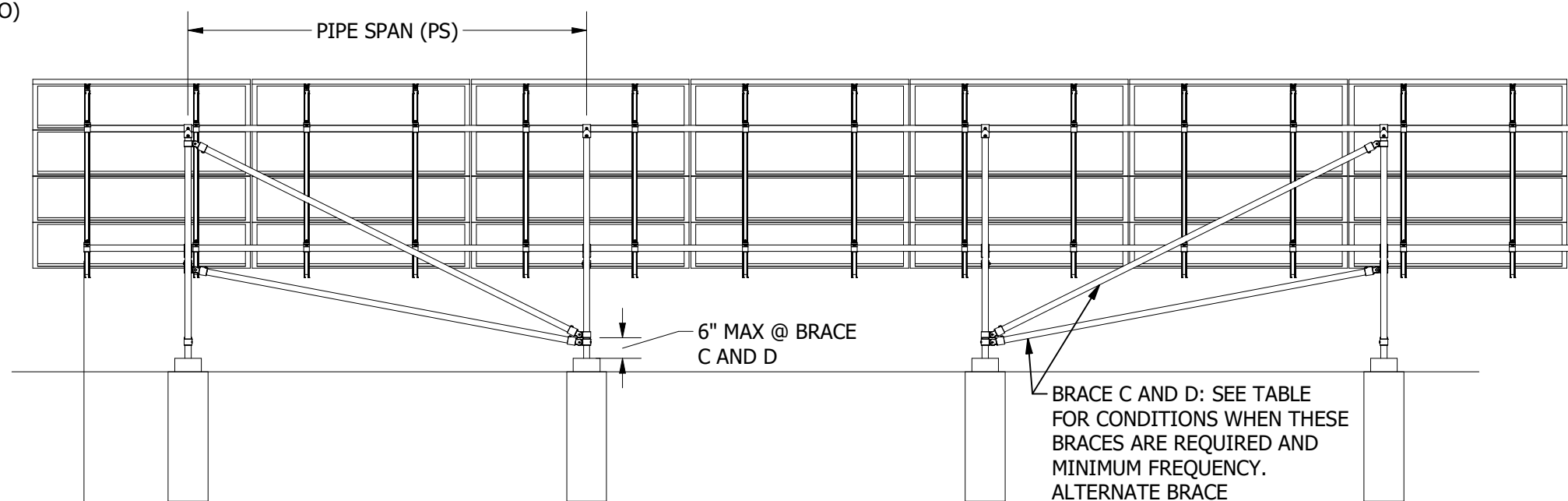
ISO VIEW OF RACKING ASSEMBLY



DETAILED VIEW OF PIPE TO RAIL AND BRACING INTERFACE



ARRAY SIDE VIEW



ARRAY BACK VIEW