

THE SNAPNRACK MIGHTYMOUNT METAL-T RACKING SYSTEM IS A SIMPLE SOLUTION FOR INSTALLATIONS ON FLAT OR LOW PITCH CORRUGATED METAL ROOFS

SOLAR PANELS CAN BE INSTALLED IN LANDSCAPE ORIENTATION ONLY

TWO TRACK LENGTHS ARE AVAILABLE TO SUIT DIFFERENT CORRUGATION SPACING. TRACKS SPAN ACROSS RIDGES OF CORRUGATIONS AND ATTACH WITH FOUR SCREWS EACH (MIN)

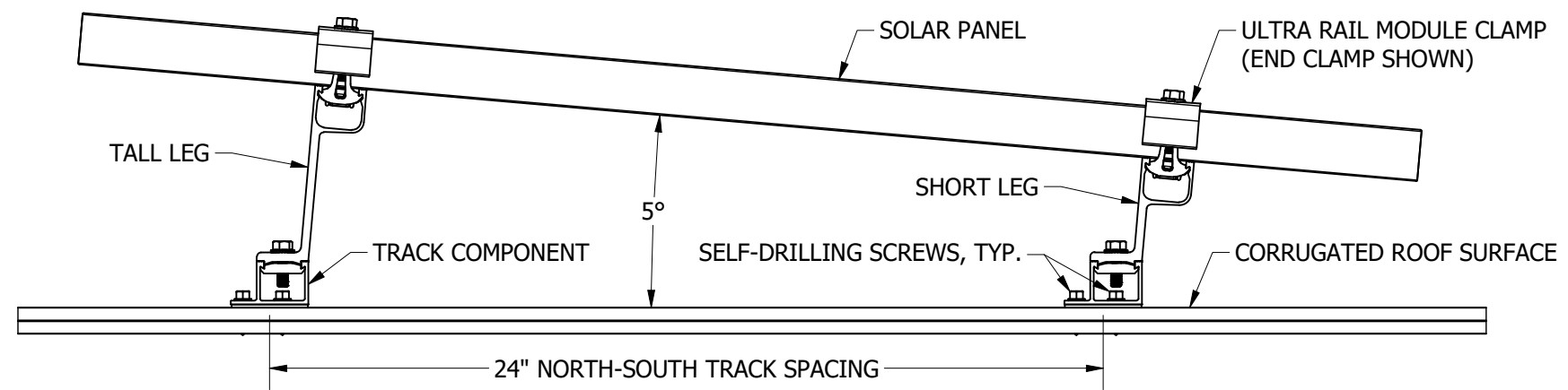
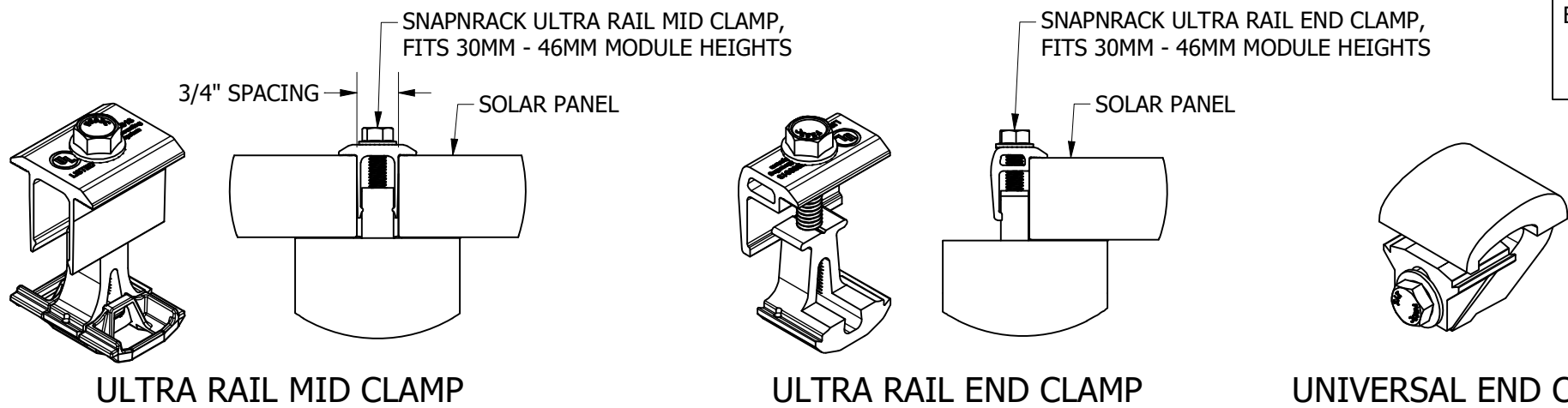
REFER TO ENGINEERING DOCUMENTATION FOR APPROVED INSTALLATION CONDITIONS

REFER TO SNAPNRACK INSTALLATION MANUAL FOR 5/16"Ø HARDWARE TORQUE SPECIFICATIONS

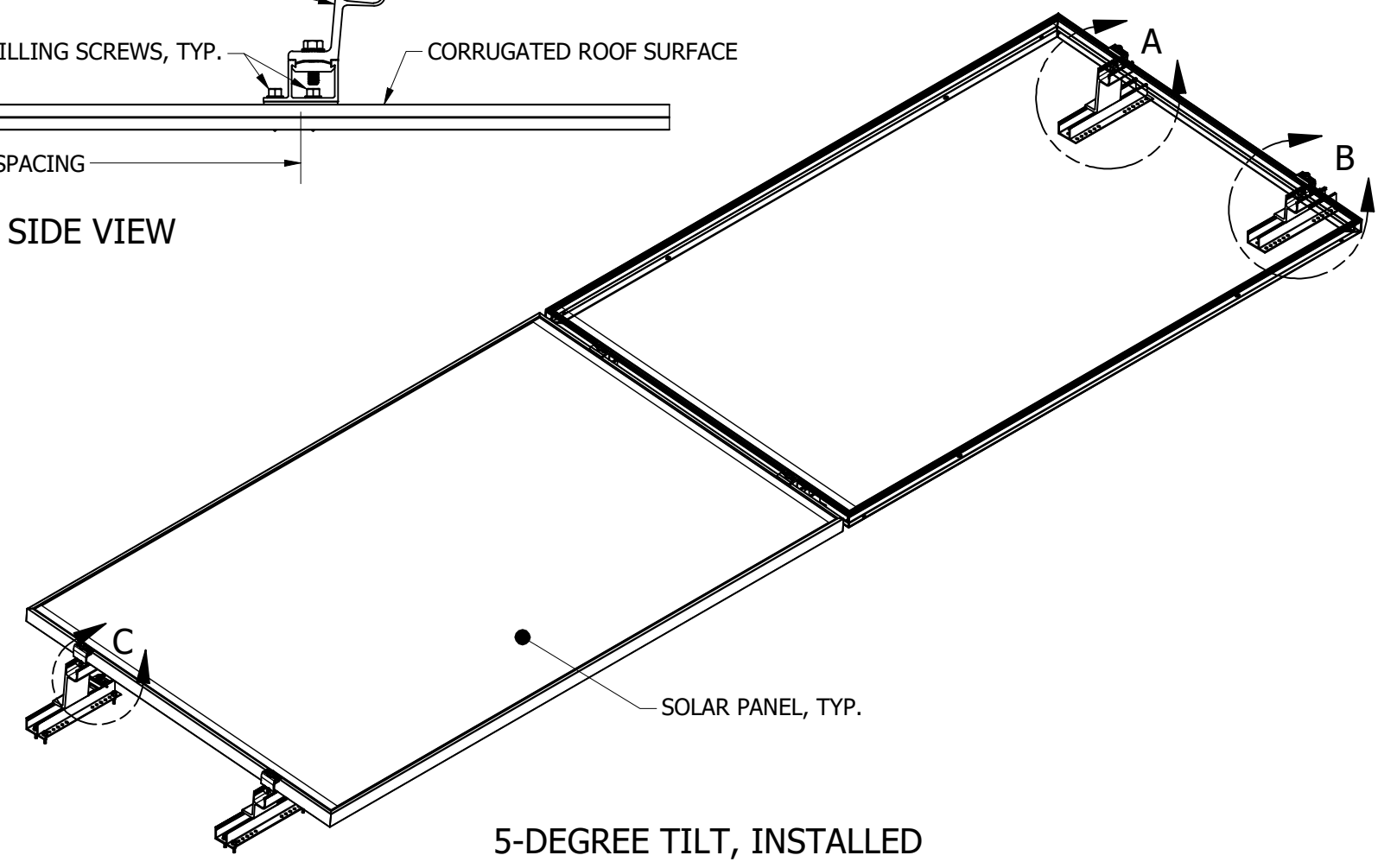
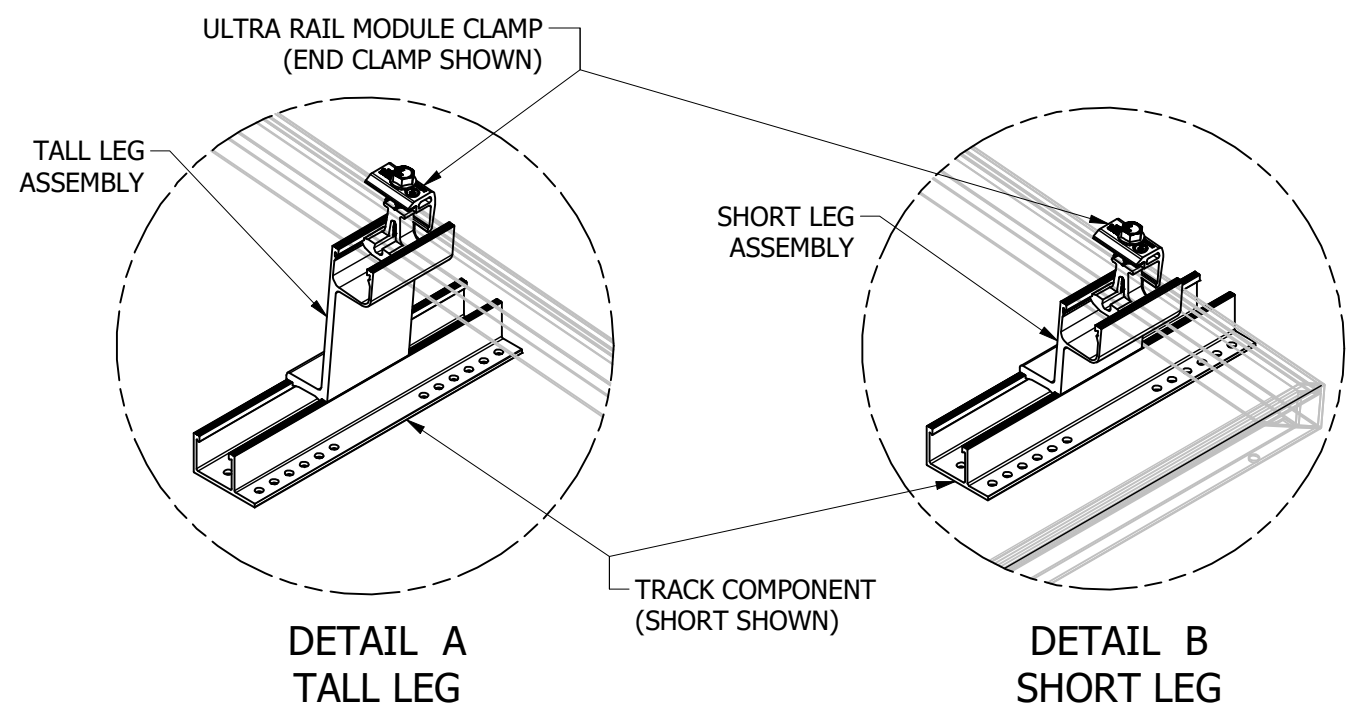
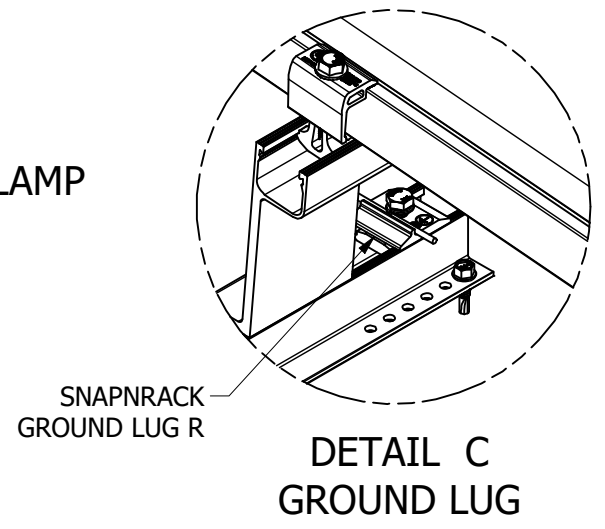
MODULE-TO-MODULE BONDING PROVIDED BY ULTRA RAIL MID CLAMPS. BONDING IS ALSO PROVIDED FROM MODULE CLAMP TO LEG TO TRACK. SINGLE GROUND LUG REQUIRED PER CONTINUOUS MODULE ROW, INSTALLED ON TRACK PER DETAIL C

BIN: N/A

REVISION:	A	5/24/2022	NEW DETAIL	MKW



5-DEGREE TILT, SIDE VIEW



5-DEGREE TILT, INSTALLED