

TOPSPEED ROOF ATTACHMENT DETAIL TO WOOD DECK

EACH MOUNT HAS 1" OF LEVELING CAPABILITY

REFER TO SNAPNRACK INSTALLATION MANUAL FOR HARDWARE TORQUE SPECIFICATIONS

FOR ATTACHMENT SPECIFICATIONS, SEE: "SNR-DC-30004 TOPSPEED, ATTACHMENT DETAIL, MOUNT TO WOOD DECK"

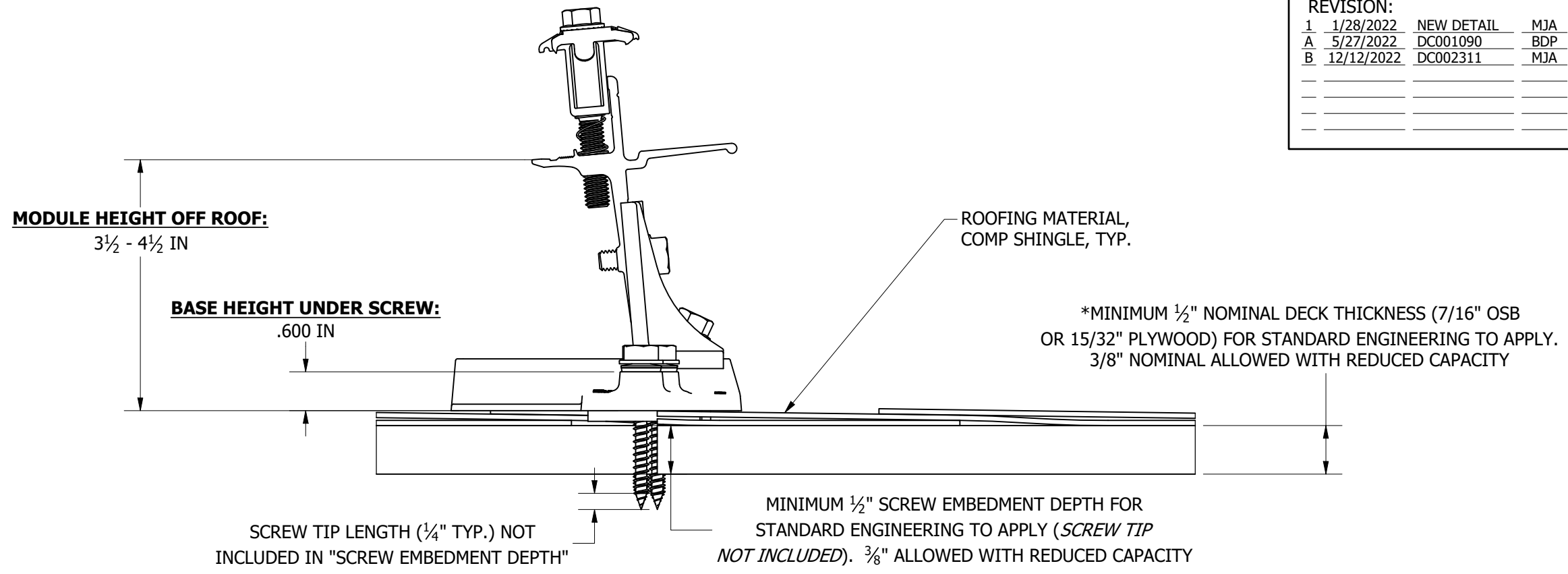
FOR MOUNT PLACEMENT SPECIFICATIONS, SEE: "SNR-DC-30005 TOPSPEED, MOUNT PLACEMENT ON SOLAR PANEL"

FOR BASIC SYSTEM INFORMATION SEE: "SNR-DC-30006, TOPSPEED, SYSTEM OVERVIEW ON COMP"

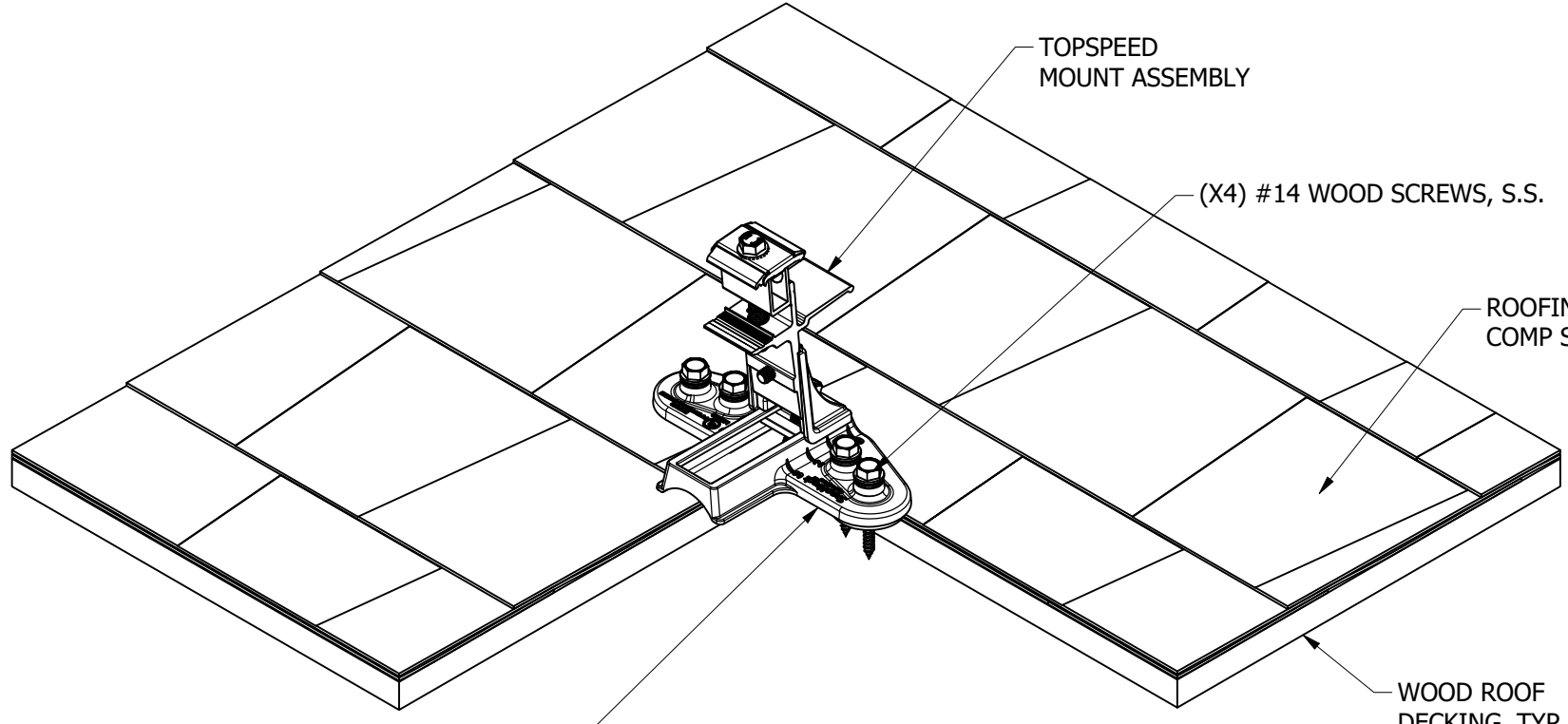
FOR SPECIAL CASE INSTALLATIONS SEE: "SNR-DC-30007 TOPSPEED, SPECIAL CASE INSTALLATION"

*MINIMUM 1/2" NOMINAL PLYWOOD OR OSB ROOF DECKING REQUIRED FOR STANDARD ENGINEERING TO APPLY. 3/8" NOMINAL DECKING MAY BE USED WITH THE REDUCED CAPACITIES STATED IN SNAPNRACK'S TOPSPEED ENGINEERING LETTER

REVISION:		
1	1/28/2022	NEW DETAIL MJA
A	5/27/2022	DC001090 BDP
B	12/12/2022	DC002311 MJA



ATTACHMENT DETAIL



OVERVIEW

FILL "SPEEDSEAL" CAVITIES WITH APPROPRIATE ROOF SEALANT TO WATERPROOF ATTACHMENT. SEE INSTALLATION MANUAL FOR DETAILS ON PROPER PLACEMENT ON COURSE



Sunrun South LLC
 595 MARKET STREET, 29TH FLOOR • SAN FRANCISCO, CA 94105 USA
 PHONE (415) 580-6900 • FAX (415) 580-6902
THE INFORMATION IN THIS DRAWING IS CONFIDENTIAL AND PROPRIETARY. ANY REPRODUCTION, DISCLOSURE, OR USE THEREOF IS PROHIBITED WITHOUT THE WRITTEN CONSENT OF SUNRUN SOUTH LLC.

DESIGNER: M.AFFENTRANGER
 DRAFTER: M.AFFENTRANGER
 APPROVED BY: E.FERGUSON

SCALE: NTS
 DATE: 12/12/2022

DRAWING NUMBER:
 SNR-DC-30004

DESCRIPTION: TOPSPEED, ATTACHMENT DETAIL, MOUNT TO WOOD DECK

REV: **B**