

SNAPRACK TOPSPEED SOLAR PANEL MOUNTING SOLUTION INSTALLED ON COMPOSITION SHINGLE ROOF

FOR ATTACHMENT SPECIFICATIONS, SEE:
"SNR-DC-30004 TOPSPEED, ATTACHMENT DETAIL, MOUNT TO WOOD DECK"

FOR MOUNT PLACEMENT SPECIFICATIONS, SEE:
"SNR-DC-30005 TOPSPEED, MOUNT PLACEMENT ON SOLAR PANEL"

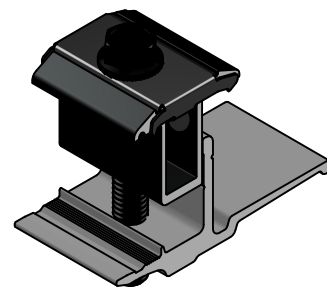
FOR SPECIAL CASE INSTALLATIONS SEE:
"SNR-DC-30007 TOPSPEED, SPECIAL CASE INSTALLATION"

TOPSPEED MOUNTS BOND ROW TO ROW IN A SINGLE COLUMN.
FRONT ROW SKIRT PROVIDES BONDING ACROSS COLUMNS.

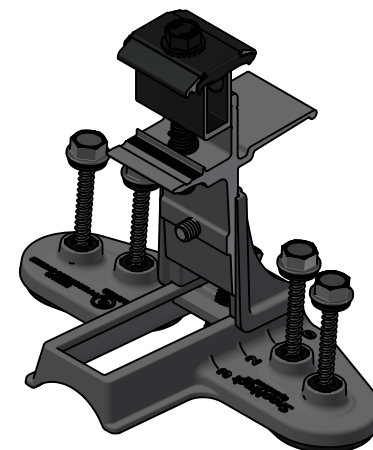
NO SOLAR PANEL SHALL CANTILEVER MORE THAN 1/4 SOLAR PANEL LENGTH OR WIDTH
DEPENDING ON ORIENTATION, UNLESS FOR MANUFACTURER SPECIFIED CLAMPING ZONE. A
TOPSPEED MOUNT OR TOPSPEED CLAMP MAY BE USED TO SATISFY THIS CONDITION.

SINGLE SOLAR PANEL ARRAYS SHALL USE MIN. (4) MOUNTS WITH MIN. TWO MOUNTS ON
EACH LEADING EDGE.

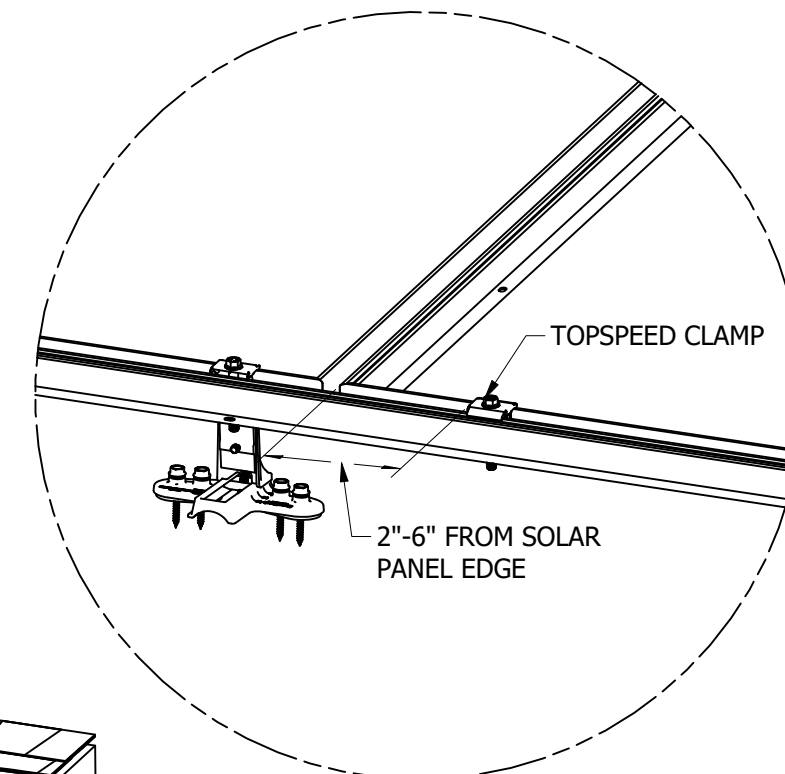
REVISION:			
1	1/28/2022	NEW DETAIL	MJA
A	5/27/2022	DC001090	BDP
B	7/28/2022	DC001321	MJA
C	6/27/2023	DC002806	MJA



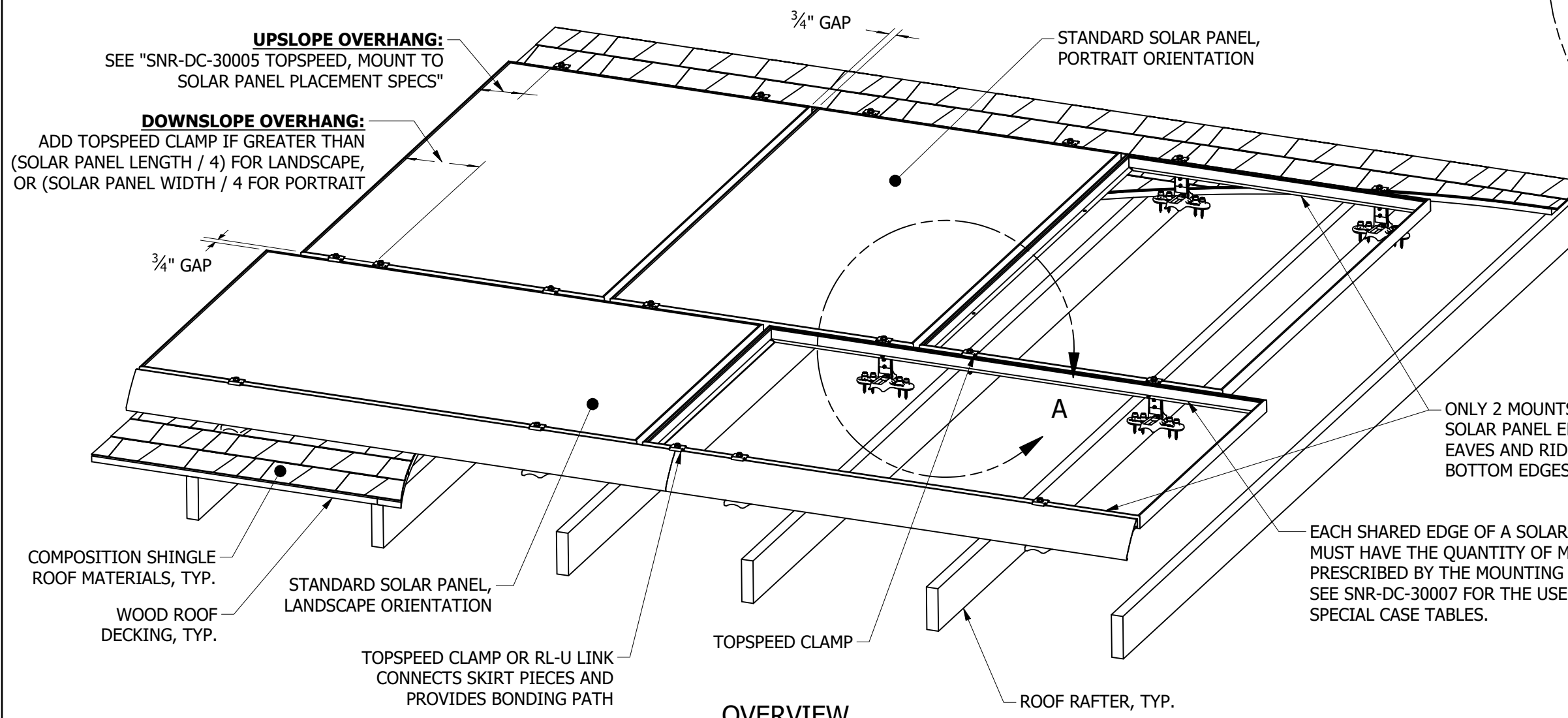
TOPSPEED CLAMP
SOLAR PANEL CANTILEVER SUPPORT



TOPSPEED MOUNT
ROOF AND SOLAR PANEL ATTACHMENT



DETAIL A
TOPSPEED CLAMP PLACEMENT



OVERVIEW

ONLY 2 MOUNTS ARE REQUIRED ON UNSHARED SOLAR PANEL EDGES THAT RUN PARALLEL TO EAVES AND RIDGES, SUCH AS THE TOP AND BOTTOM EDGES OF THE ARRAY

EACH SHARED EDGE OF A SOLAR PANEL MUST HAVE THE QUANTITY OF MOUNTS PRESCRIBED BY THE MOUNTING TABLES. SEE SNR-DC-30007 FOR THE USE OF SPECIAL CASE TABLES.

	Sunrun South LLC 595 MARKET STREET, 29TH FLOOR • SAN FRANCISCO, CA 94105 USA PHONE (415) 580-6900 • FAX (415) 580-6902 <small>THE INFORMATION IN THIS DRAWING IS CONFIDENTIAL AND PROPRIETARY. ANY REPRODUCTION, DISCLOSURE, OR USE THEREOF IS PROHIBITED WITHOUT THE WRITTEN CONSENT OF SUNRUN SOUTH LLC.</small>	DESIGNER: <u>M.AFFENTRANGER</u>	SCALE: <u>NTS</u>	DRAWING NUMBER: <u>SNR-DC-30006</u>	DESCRIPTION: <u>TOPSPEED, SYSTEM OVERVIEW ON COMP</u>	REV: <u>C</u>
		DRAFTER: <u>M.AFFENTRANGER</u>	DATE: <u>6/27/2023</u>	APPROVED BY: <u>B.PETERSON</u>		