

SNAPNRACK ULTRA RAIL STANDARD STANDOFF ON 4-HOLE BASE MOUNTED TO COMPOSITE I-JOIST

REFER TO SNAPNRACK ENGINEERING CHARTS FOR APPLICABLE RAIL SPANS. "BIN" NUMBER ON CHART SHOULD MATCH "BIN" NUMBER ON THIS DRAWING:

\***BIN 5** WHEN INSTALLED WITH 5 1/2" STANDOFF

\***BIN 6** WHEN INSTALLED WITH 8 1/2" STANDOFF

1/4"Ø S.S. LAG SCREWS MUST EMBED A MIN. OF 1 1/4" INTO JOIST

REFER TO SNAPNRACK INSTALLATION MANUAL FOR 5/16"Ø HARDWARE TORQUE SPECIFICATIONS

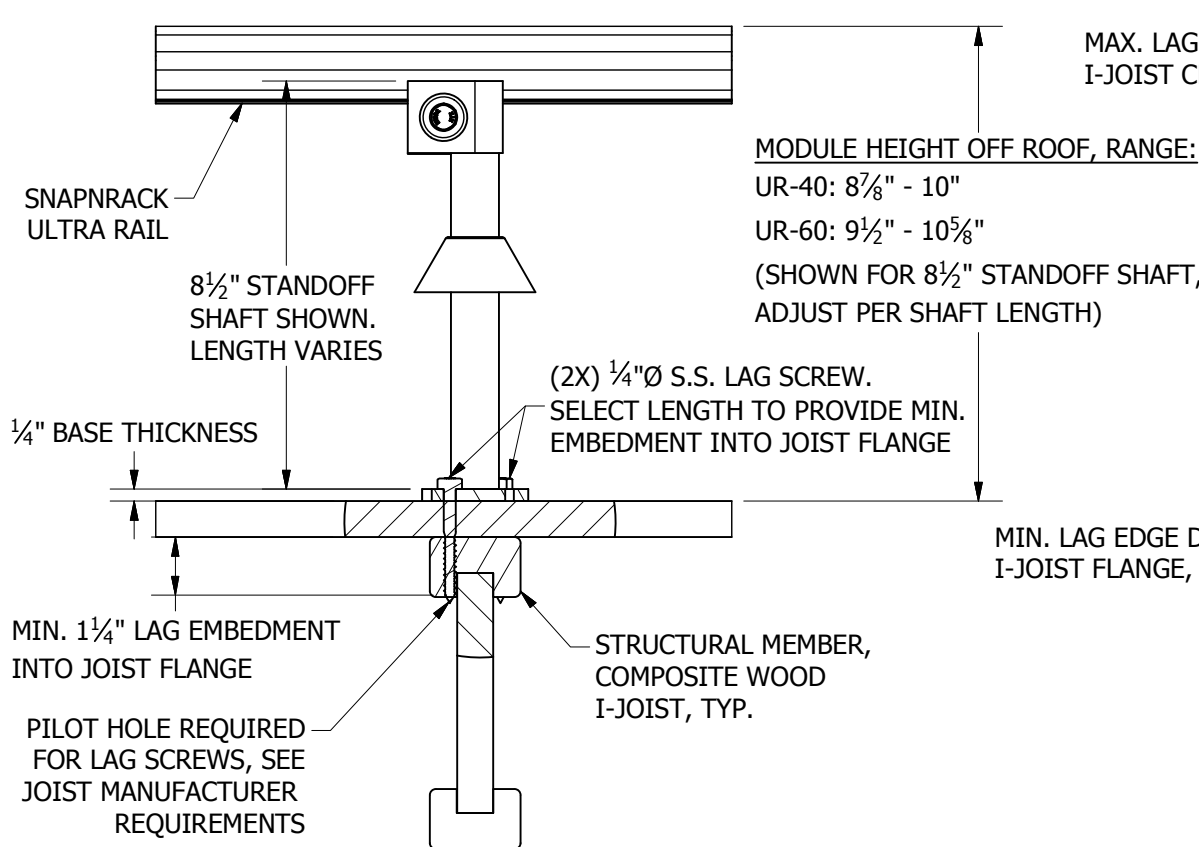
RAILS CAN MOUNT UPSLOPE OR DOWNSLOPE OF THE STANDOFF SHAFT

FOR LEVELING DETAILS, REFER TO SNAPNRACK DETAIL DRAWING "SNR-DC-00334 ULTRA RAIL, COMPONENT DETAIL, LEVELING SPACER ON STANDOFF"

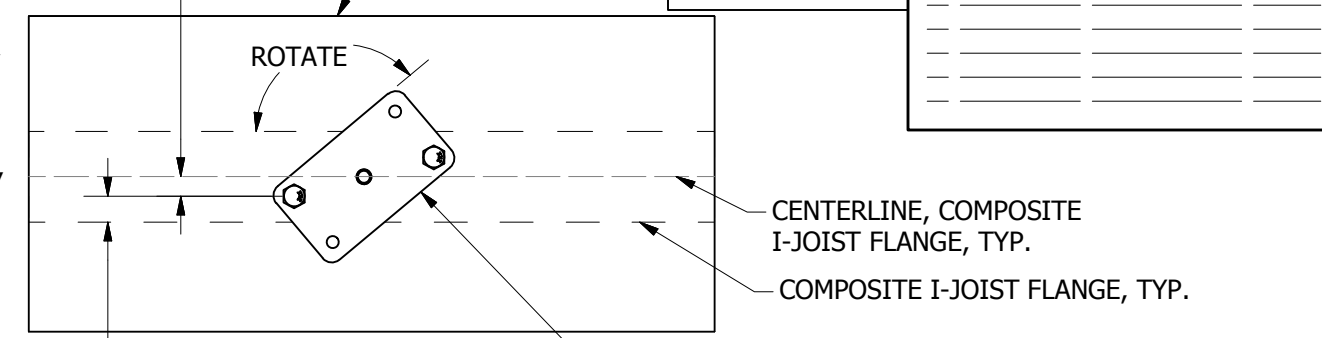
\*\*A POURED SEALANT-STYLE FLASHING MAY BE USED WITH SNAPNRACK STANDOFFS AS AN ALTERNATIVE TO CONE FLASHINGS WHEN INSTALLED PER THE MANUFACTURER'S SPECIFICATIONS ON LOW-SLOPE ROOF SURFACES

BIN: \*5, \*6

REVISION:	DATE	DESCRIPTION	BY
1	5/7/2019	NEW DETAIL	MJA



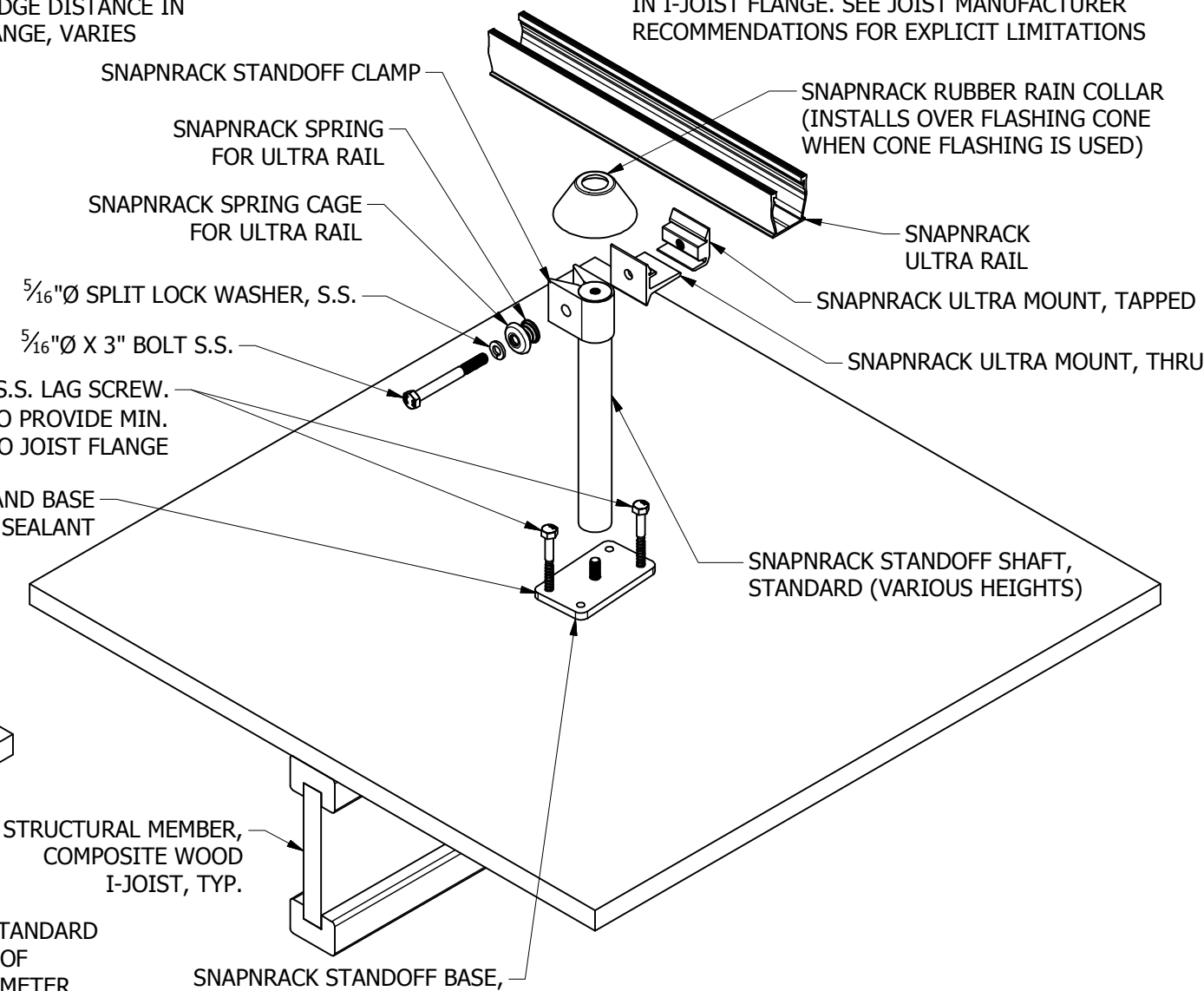
MAX. LAG OFFSET DISTANCE FROM I-JOIST CENTERLINE, VARIES



**BASE ROTATION, TOP**

4-HOLE BASE SHALL BE ROTATED TO MAINTAIN PROPER EDGE AND CENTERLINE OFFSET DISTANCES IN I-JOIST FLANGE. SEE JOIST MANUFACTURER RECOMMENDATIONS FOR EXPLICIT LIMITATIONS

MIN. LAG EDGE DISTANCE IN I-JOIST FLANGE, VARIES



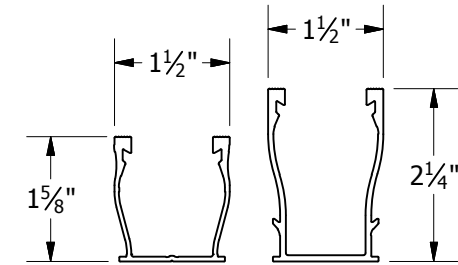
COVER FLASHING WITH SNAPNRACK RAIN COLAR AND SEAL WITH AN APPROPRIATE ADHESIVE ROOF SEALANT

SEAL PENETRATION AND BASE WITH APPROPRIATE ROOF SEALANT

STRUCTURAL MEMBER, COMPOSITE WOOD I-JOIST, TYP.

STRUCTURAL MEMBER, COMPOSITE WOOD I-JOIST, TYP.

\*\*FLASH POST WITH STANDARD GALVANIZED STEEL ROOF FLASHINGS FOR 1" DIAMETER VENT PIPE. TRIM FLASH FLASHING BASE WHEN APPROPRIATE.



UR-40 RAIL | UR-60 RAIL

FOR USE WITH SNAPNRACK ULTRA SERIES RAILS

**INSTALLED**

ROOF DECKING, TYP.



Sunrun South LLC  
595 MARKET STREET, 29TH FLOOR • SAN FRANCISCO, CA 94105 USA  
PHONE (415) 580-6900 • FAX (415) 580-6902  
THE INFORMATION IN THIS DRAWING IS CONFIDENTIAL AND PROPRIETARY. ANY REPRODUCTION, DISCLOSURE, OR USE THEREOF IS PROHIBITED WITHOUT THE WRITTEN CONSENT OF SUNRUN SOUTH LLC.

DESIGNER: G.MCPHEETERS  
DRAFTER: M.AFFENTRANGER  
APPROVED BY: B.PETERSON

SCALE: DNS  
DATE: 5/7/2019

DRAWING NUMBER: SNR-DC-00350

DESCRIPTION: ULTRA RAIL, ATTACHMENT DETAIL, 4-HOLE BASE WITH STANDOFF TO JOIST

REV: 1