

## General Information

The SnapNrack Universal Conduit Mount, L Foot has been evaluated by Underwriters Laboratories and is UL Listed for US and Canada to UL 2239 for above ground, outdoor use.

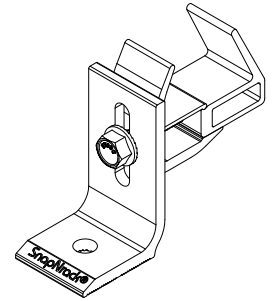
UL File E543241, DWMU/7

Conduit mount type: Aboveground (Roof-Top). Suitable for Wet Locations. Suitable for maximum 10.0 ft (3.05 m) support interval or equivalent. Intended for horizontal mounting.

Sizes and types of conduit: 3/4" - 1" Trade Size EMT, 3/4" - 1" Trade Size PVC

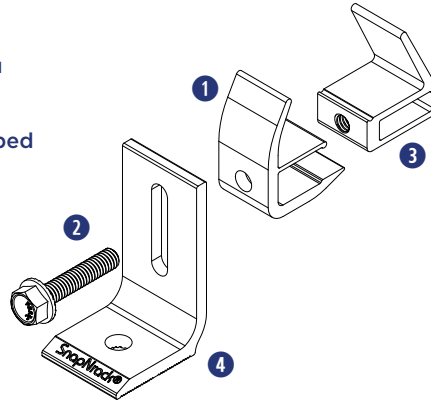
Load Rating: 50 lb (23kg).

Assembly Torque: 60 in.lb (6.78 N.m)

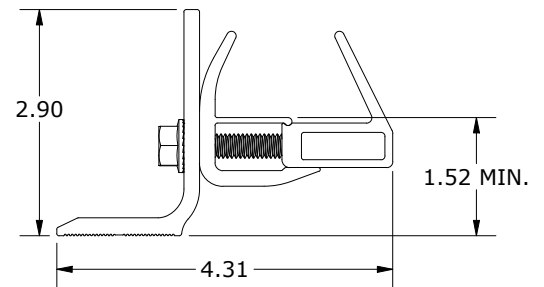


## Materials Included

- 1 SnapNrack Universal Conduit Clamp, Thru
- 2 5/16-18 x 1-1/2" Flange Bolt, SS
- 3 SnapNrack Universal Conduit Clamp, Tapped
- 4 SnapNrack AP90 L Foot



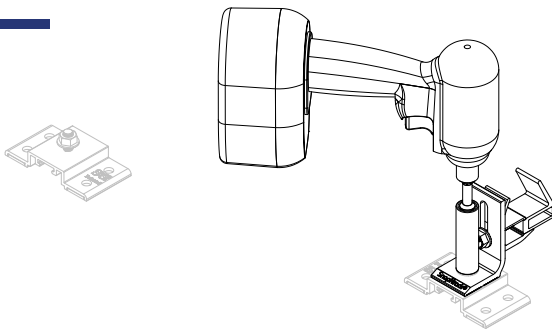
## Overall Dimensions (in inches)



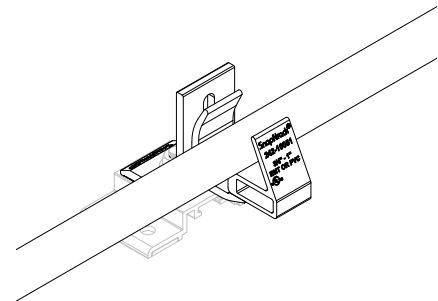
## Required Tools

- Socket Wrench/Impact Driver
- Torque Wrench
- 1/2" Socket

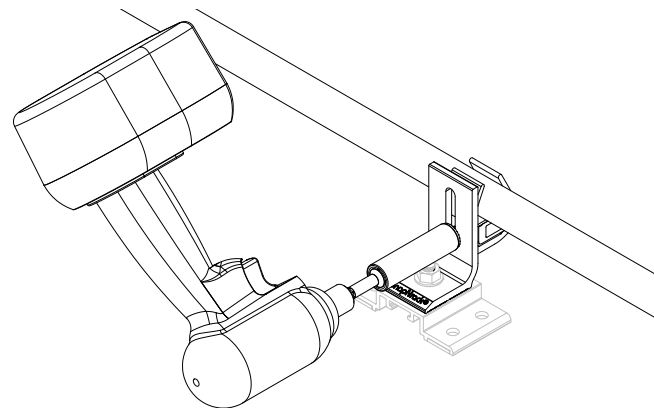
## Installation



1) The Universal Conduit Mount, L Foot may be mounted to other 3rd party solar PV roof attachments or to SnapNrack components. Use 5/16" or M8 hardware to secure the Universal Conduit Mount L-Foot.



2) Install roof attachment of choice, then install L Foot Conduit Mount and tighten mounting hardware to manufacturer specifications



3) Place conduit into the opening of the conduit clamp, adjust conduit to desired position, and tighten conduit clamp hardware to torque listed under General Information

### Install Notes:

- Other mounting devices (by SnapNrack or other manufacturers) used to attach the Universal Conduit Mount, L Foot to a building or other support structure (such as the S-5! mounting bracket shown) have not been evaluated by UL in combination with the Universal Conduit Mount, L Foot and are not certified by UL
- Use mounting devices with a load capacity equal to or greater than the load rating listed under General Information
- 300 Series Stainless Steel or equivalent fasteners are recommended